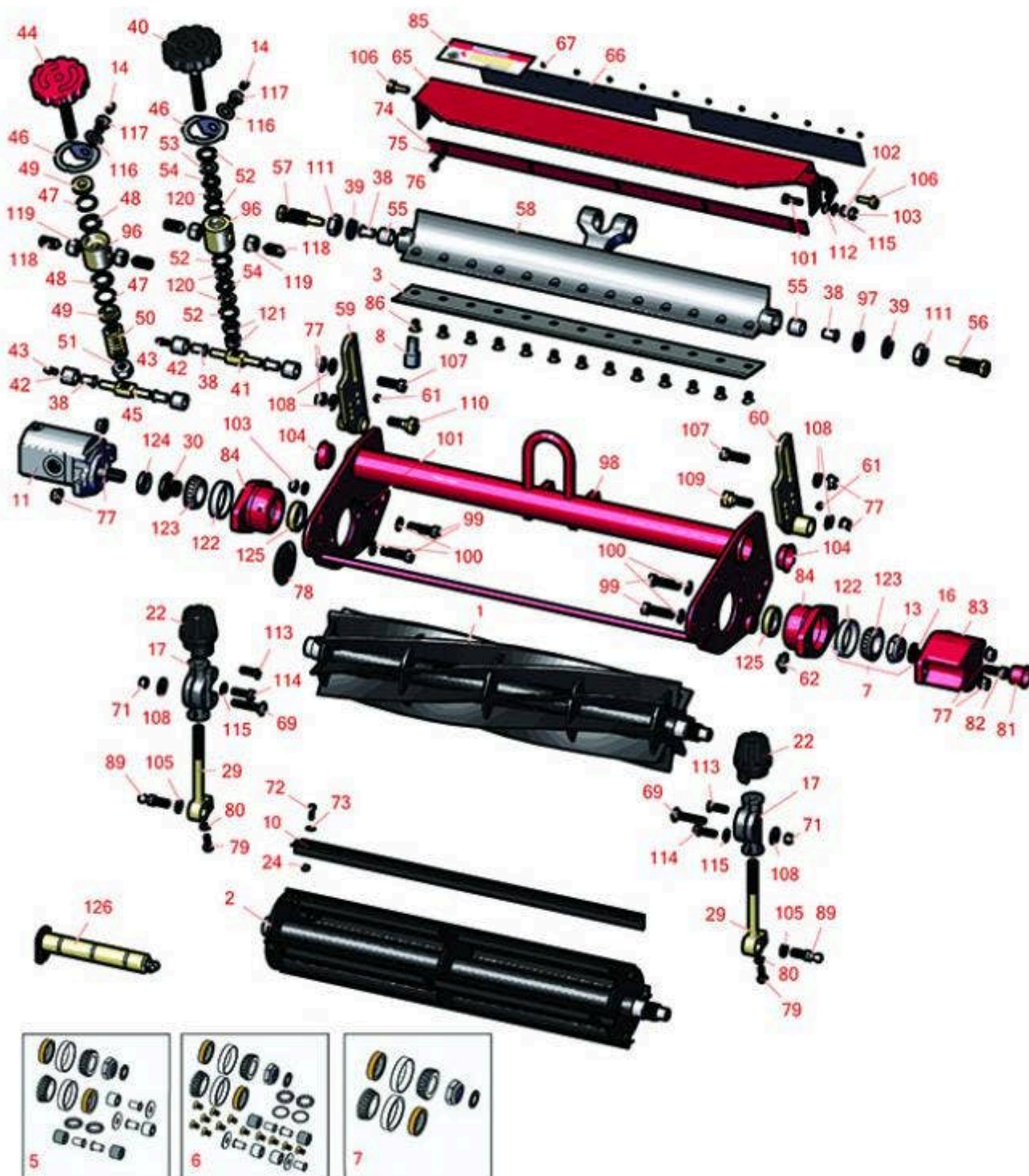




# Replaces Toro Greensmaster 3100 Parts

SPA Cutting Unit - Models 04445, 04448 & 04450  
Reel & Bedknife



All original equipment manufacturers names and part numbers are used for identification purposes only, and we are in no way implying that our products are original equipment parts. Prices subject to change without notice.



## Replaces Toro Greensmaster 3100 Parts

SPA Cutting Unit - Models 04445, 04448 & 04450  
Reel & Bedknife



Item No	R&R Part No.	OEM Part No.	Description	Qty Req	Order Quantity
---------	--------------	--------------	-------------	---------	----------------

### R&R Reels, Lifetime Guaranteed

1	<b>R150760</b>		Reel - 14 Blade	1	
---	----------------	--	-----------------	---	--

*Detail Description: R&R Reel blades are expertly crafted from premium high carbon-boron alloy steel, heat-treated to perfectly complement both R&R and OEM bedknives. Each reel undergoes precision cylindrical grinding on bearing surfaces, followed by relief grinding for optimal performance. Advanced computer balancing ensures extended reel and bearing life. Backed by our lifetime guarantee against defects in materials and craftsmanship under normal use, R&R Reels deliver unmatched durability and cutting precision you can trust.:*

1	<b>R12-2789</b>	12-2789, 130-6470	Reel - 11 Blade	1	
---	-----------------	----------------------	-----------------	---	--

*Detail Description: R&R Reel blades are manufactured from high carbon-boron alloy steel and then hardened to RC46-49 to match the temper of our bedknives and original equipment bedknives. All R&R Reels are cylindrically ground on bearing surfaces and then relief ground. Reels are then precision computer balanced for extended bearing and reel life. R&R Products Reels are guaranteed against defects in material and workmanship for the life of the reel under normal use.:*

1	<b>R5-3195</b>		Reel - 9 Blade	1	
---	----------------	--	----------------	---	--

*Detail Description: R&R Reel blades are expertly crafted from premium high carbon-boron alloy steel, heat-treated to perfectly complement both R&R and OEM bedknives. Each reel undergoes precision cylindrical grinding on bearing surfaces, followed by relief grinding for optimal performance. Advanced computer balancing ensures extended reel and bearing life. Backed by our lifetime guarantee against defects in materials and craftsmanship under normal use, R&R Reels deliver unmatched durability and cutting precision you can trust.:*

1	<b>R5-3189</b>	12-3599, 130-6469, 5-3189	Reel - 8 Blade	1	
---	----------------	---------------------------------	----------------	---	--

*Detail Description: R&R Reel blades are expertly crafted from premium high carbon-boron alloy steel, heat-treated to perfectly complement both R&R and OEM bedknives. Each reel undergoes precision cylindrical grinding on bearing surfaces, followed by relief grinding for optimal performance. Advanced computer balancing ensures extended reel and bearing life. Backed by our lifetime guarantee against defects in materials and craftsmanship under normal use, R&R Reels deliver unmatched durability and cutting precision you can trust.:*

1	<b>R5-3189H</b>		Reel - 8 Blade Heavy Duty	1	
---	-----------------	--	---------------------------	---	--

All original equipment manufacturers names and part numbers are used for identification purposes only, and we are in no way implying that our products are original equipment parts. Prices subject to change without notice.



## Replaces Toro Greensmaster 3100 Parts

SPA Cutting Unit - Models 04445, 04448 & 04450  
Reel & Bedknife



Item No	R&R Part No.	OEM Part No.	Description	Qty Req	Order Quantity
<i>Detail Description: R&amp;R Reel blades are expertly crafted from premium high carbon-boron alloy steel, heat-treated to perfectly complement both R&amp;R and OEM bedknives. Each reel undergoes precision cylindrical grinding on bearing surfaces, followed by relief grinding for optimal performance. Advanced computer balancing ensures extended reel and bearing life. Backed by our lifetime guarantee against defects in materials and craftsmanship under normal use, R&amp;R Reels deliver unmatched durability and cutting precision you can trust.:</i>					
1	<b>R5-3206</b>		Reel - 6 Blade	1	
<i>Detail Description: R&amp;R Reel blades are expertly crafted from premium high carbon-boron alloy steel, heat-treated to perfectly complement both R&amp;R and OEM bedknives. Each reel undergoes precision cylindrical grinding on bearing surfaces, followed by relief grinding for optimal performance. Advanced computer balancing ensures extended reel and bearing life. Backed by our lifetime guarantee against defects in materials and craftsmanship under normal use, R&amp;R Reels deliver unmatched durability and cutting precision you can trust.:</i>					
1	<b>R5-3205</b>	12-0729	Reel - 5 Blade	1	
<i>Detail Description: R&amp;R Reel blades are expertly crafted from premium high carbon-boron alloy steel, heat-treated to perfectly complement both R&amp;R and OEM bedknives. Each reel undergoes precision cylindrical grinding on bearing surfaces, followed by relief grinding for optimal performance. Advanced computer balancing ensures extended reel and bearing life. Backed by our lifetime guarantee against defects in materials and craftsmanship under normal use, R&amp;R Reels deliver unmatched durability and cutting precision you can trust.:</i>					
1	<b>R5-3215</b>		Reel - 5 Blade Heavy Duty	1	
<i>Detail Description: R&amp;R Reel blades are expertly crafted from premium high carbon-boron alloy steel, heat-treated to perfectly complement both R&amp;R and OEM bedknives. Each reel undergoes precision cylindrical grinding on bearing surfaces, followed by relief grinding for optimal performance. Advanced computer balancing ensures extended reel and bearing life. Backed by our lifetime guarantee against defects in materials and craftsmanship under normal use, R&amp;R Reels deliver unmatched durability and cutting precision you can trust.:</i>					
1	<b>R5-3200</b>		Reel - 4 Blade	1	
<i>Detail Description: R&amp;R Reel blades are expertly crafted from premium high carbon-boron alloy steel, heat-treated to perfectly complement both R&amp;R and OEM bedknives. Each reel undergoes precision cylindrical grinding on bearing surfaces, followed by relief grinding for optimal performance. Advanced computer balancing ensures extended reel and bearing life. Backed by our lifetime guarantee against defects in materials and craftsmanship under normal use, R&amp;R Reels deliver unmatched durability and cutting precision you can trust.:</i>					
1	<b>R14-0659</b>	14-0659, 57-5300	Reel - 5 Blade Heavy Duty	0	

All original equipment manufacturers names and part numbers are used for identification purposes only, and we are in no way implying that our products are original equipment parts. Prices subject to change without notice.



## Replaces Toro Greensmaster 3100 Parts

SPA Cutting Unit - Models 04445, 04448 & 04450  
Reel & Bedknife



Item No	R&R Part No.	OEM Part No.	Description	Qty Req	Order Quantity
---------	--------------	--------------	-------------	---------	----------------

***Detail Description:** R&R Reel blades are expertly crafted from premium high carbon-boron alloy steel, heat-treated to perfectly complement both R&R and OEM bedknives. Each reel undergoes precision cylindrical grinding on bearing surfaces, followed by relief grinding for optimal performance. Advanced computer balancing ensures extended reel and bearing life. Backed by our lifetime guarantee against defects in materials and craftsmanship under normal use, R&R Reels deliver unmatched durability and cutting precision you can trust.:*

2	<b>R150480</b>		Brush Reel	1	
---	----------------	--	------------	---	--

***Detail Description:** R&R Products Brush Reels are an exciting concept in greens maintenance to clean sand and other debris left on grass surfaces after top dressing. If left on the turf, this sand and debris can cause dulling and excessive wear on mowing reels and bed knives. However, with the use of R&R Brush Reels, sand and debris are easily swept into conventional grass baskets. R&R Brush Reels are also used to stand turf up before mowing to give a cleaner, more uniform and truer putting surface. Designed with four replaceable brushes mounted in a metal frame, simply replace regular mowing reels with R&R Brush Reels and adjust bedknife to clear the brushes. The height of cut should be set to the top of the grass blades or slightly below. \*Remove bedknife for the removal of pine needles.<BR><BR>**SUGGESTED USAGE:** Verticutting - Dew Removal - Leaf Clean Up - Thatch Prevention Prior to Overseeding - Grooming before Mowing - Removal of Excessive Top Dressing:*

### **R&R Bedknives, Lifetime Guaranteed**

3	<b>R150466</b>	63-8600, 64-6393, 94-6393	Bedknife - Super Thick .312 - 1.00 HOC	1	
---	----------------	---------------------------------	---	---	--

***Detail Description:** R&R Bedknives are manufactured from high carbon-boron alloy steel and then hardened to RC46-49 to match the temper of our reel blades and original equipment reels. Bedknives are surface ground on the top and front edge and straightened three times before being packaged with oil for rust prevention. All R&R Bedknives now have an increased front edge grind for added life. All R&R Bedknives are guaranteed against defects in material and workmanship under normal use for the life of the part.:*

3	<b>R150462</b>	63-8610, 94-6396	Bedknife - 7 Hole Thick 5/16	1	
---	----------------	---------------------	------------------------------	---	--

***Detail Description:** R&R Bedknives are manufactured from high carbon-boron alloy steel and then hardened to RC46-49 to match the temper of our reel blades and original equipment reels. Bedknives are surface ground on the top and front edge and straightened three times before being packaged with oil for rust prevention. All R&R Bedknives now have an increased front edge grind for added life. All R&R Bedknives are guaranteed against defects in material and workmanship under normal use for the life of the part.:*

All original equipment manufacturers names and part numbers are used for identification purposes only, and we are in no way implying that our products are original equipment parts. Prices subject to change without notice.





## Replaces Toro Greensmaster 3100 Parts

SPA Cutting Unit - Models 04445, 04448 & 04450  
Reel & Bedknife



Item No	R&R Part No.	OEM Part No.	Description	Qty Req	Order Quantity
3	<b>R94-6396</b>	10-4900, 54-9150, 94-6396, Oct-00	Bedknife - High Cut 5/16"-1" HOC	1	

*Detail Description: R&R Bedknives are manufactured from high carbon-boron alloy steel and then hardened to RC46-49 to match the temper of our reel blades and original equipment reels. Bedknives are surface ground on the top and front edge and straightened three times before being packaged with oil for rust prevention. All R&R Bedknives now have an increased front edge grind for added life. All R&R Bedknives are guaranteed against defects in material and workmanship under normal use for the life of the part.:*

3	<b>R63-8610</b>	63-8610	Bedknife - Fairway Cut .375 - 1.00 HOC	1	
---	-----------------	---------	---	---	--

*Detail Description: R&R Bedknives are manufactured from high carbon-boron alloy steel and then hardened to RC46-49 to match the temper of our reel blades and original equipment reels. Bedknives are surface ground on the top and front edge and straightened three times before being packaged with oil for rust prevention. All R&R Bedknives now have an increased front edge grind for added life. All R&R Bedknives are guaranteed against defects in material and workmanship under normal use for the life of the part.:*

3	<b>R94-6392</b>	62-2500, 94-6392	Bedknife - High Cut .312 - 1.00 HOC	1	
---	-----------------	---------------------	--	---	--

*Detail Description: R&R Bedknives are manufactured from high carbon-boron alloy steel and then hardened to RC46-49 to match the temper of our reel blades and original equipment reels. Bedknives are surface ground on the top and front edge and straightened three times before being packaged with oil for rust prevention. All R&R Bedknives now have an increased front edge grind for added life. All R&R Bedknives are guaranteed against defects in material and workmanship under normal use for the life of the part.:*

3	<b>R93-4264</b>	57-4960, 63-8470, 93-4264	Bedknife - Low Cut .187 - 1.00 HOC	1	
---	-----------------	---------------------------------	---------------------------------------	---	--

*Detail Description: R&R Bedknives are manufactured from high carbon-boron alloy steel and then hardened to RC46-49 to match the temper of our reel blades and original equipment reels. Bedknives are surface ground on the top and front edge and straightened three times before being packaged with oil for rust prevention. All R&R Bedknives now have an increased front edge grind for added life. All R&R Bedknives are guaranteed against defects in material and workmanship under normal use for the life of the part.:*

All original equipment manufacturers names and part numbers are used for identification purposes only, and we are in no way implying that our products are original equipment parts. Prices subject to change without notice.



## Replaces Toro Greensmaster 3100 Parts

SPA Cutting Unit - Models 04445, 04448 & 04450  
Reel & Bedknife



Item No	R&R Part No.	OEM Part No.	Description	Qty Req	Order Quantity
3	<b>R93-4263</b>	63-8560, 66-9320, 93-4263, 93-6039	Bedknife - Tournament Cut .125 - .500 HOC	1	
<i>Detail Description: R&amp;R Bedknives are manufactured from high carbon-boron alloy steel and then hardened to RC46-49 to match the temper of our reel blades and original equipment reels. Bedknives are surface ground on the top and front edge and straightened three times before being packaged with oil for rust prevention. All R&amp;R Bedknives now have an increased front edge grind for added life. All R&amp;R Bedknives are guaranteed against defects in material and workmanship under normal use for the life of the part.:</i>					
3	<b>R94-6394</b>	51-2610, 63-8550, 94-6394	Bedknife - Tournament 1/8-1/2 HOC	1	
<i>Detail Description: R&amp;R Bedknives are manufactured from high carbon-boron alloy steel and then hardened to RC46-49 to match the temper of our reel blades and original equipment reels. Bedknives are surface ground on the top and front edge and straightened three times before being packaged with oil for rust prevention. All R&amp;R Bedknives now have an increased front edge grind for added life. All R&amp;R Bedknives are guaranteed against defects in material and workmanship under normal use for the life of the part.:</i>					
3	<b>R94-6395</b>	17-7040, 19-8880, 62-2510, 63-8500, 94-6395	Bedknife - Low Cut 3/16"-1" HOC	1	
<i>Detail Description: R&amp;R Bedknives are manufactured from high carbon-boron alloy steel and then hardened to RC46-49 to match the temper of our reel blades and original equipment reels. Bedknives are surface ground on the top and front edge and straightened three times before being packaged with oil for rust prevention. All R&amp;R Bedknives now have an increased front edge grind for added life. All R&amp;R Bedknives are guaranteed against defects in material and workmanship under normal use for the life of the part.:</i>					
3	<b>R93-4262</b>	65-8250, 93-4262, 93-4263	Bedknife - Micro Cut .062 - .187 HOC	1	
<i>Detail Description: R&amp;R Bedknives are manufactured from high carbon-boron alloy steel and then hardened to RC46-49 to match the temper of our reel blades and original equipment reels. Bedknives are surface ground on the top and front edge and straightened three times before being packaged with oil for rust prevention. All R&amp;R Bedknives now have an increased front edge grind for added life. All R&amp;R Bedknives are guaranteed against defects in material and workmanship under normal use for the life of the part.:</i>					

All original equipment manufacturers names and part numbers are used for identification purposes only, and we are in no way implying that our products are original equipment parts. Prices subject to change without notice.



## Replaces Toro Greensmaster 3100 Parts

SPA Cutting Unit - Models 04445, 04448 & 04450  
Reel & Bedknife



Item No	R&R Part No.	OEM Part No.	Description	Qty Req	Order Quantity
---------	--------------	--------------	-------------	---------	----------------

### R&R Razor Tool Steel Bedknives, Lifetime Guaranteed

3	<b>R115-1881</b>	115-1881	Bedknife - Razor Tool Steel - 21 Tournament Cut .125 - .500 HOC	1	
---	------------------	----------	---	---	--

*Detail Description: R&R Razor bedknives are manufactured from premium alloy tool steel steel and then hardened to RC48-51 to match the temper of our Razor reel blades and original equipment premium series reels. Bedknives are surface ground on the top and front edge and specially packaged for rust prevention. All R&R Bedknives now have an increased front edge grind for added life. All R&R Bedknives are guaranteed against defects in material and workmanship under normal use for the life of the part. You can expect up to double the life over standard bedknives.:*

3	<b>R115-1880</b>	115-1880	Bedknife - Razor Tool Steel - 21 Micro Cut .062 - .187 HOC	1	
---	------------------	----------	---	---	--

*Detail Description: R&R Razor bedknives are manufactured from premium alloy tool steel steel and then hardened to RC48-51 to match the temper of our Razor reel blades and original equipment premium series reels. Bedknives are surface ground on the top and front edge and specially packaged for rust prevention. All R&R Bedknives now have an increased front edge grind for added life. All R&R Bedknives are guaranteed against defects in material and workmanship under normal use for the life of the part. You can expect up to double the life over standard bedknives.:*

### Overhaul Kits & Service Tools

5	<b>R255-310</b>		Overhaul Kit - Cutting Unit	0	
---	-----------------	--	-----------------------------	---	--

*Detail Description: Includes 4 ea: R52-2890 Bushings; 2 ea: R237-77 O-Rings, R253-96 Seals, R254-72 Cups, R254-94 Bearings, R52-2900 Washers, R57-5280 Bearings, R62-5510 Bushings, R63-9510 Bushings; 1 ea: R253-61 Seal & R32127-46 Locknut:*

6	<b>R13-3659</b>	13-3659	Overhaul Kit - Cutting Unit	0	
---	-----------------	---------	-----------------------------	---	--

*Detail Description: Includes 13 ea.:R150477 Screws; 4 ea.: R52-2890 Bushings; 2 ea.: R237-77 O-rings, R253-96 Seals, R254-72 Bearing Cups, R254-94 Bearings, R52-2900 Washers, R57-5280 Bearings, R62-5510 Bushings, R63-9510 Bushings; 1 ea.: R253-61 Seal & R32127-46 Locknut:*

7	<b>R107-1590</b>		Overhaul Kit - Cutting Unit	0	
---	------------------	--	-----------------------------	---	--

*Detail Description: Includes 2 ea.: R253-96 Seals, R254-72 Bearing Cups, R254-94 Bearings; 1 ea.: R253-61 Seal & R32127-46 Locknut:*

8	<b>R51-0880</b>	51-0880	Bedknife Screw Driver Tool	0	
---	-----------------	---------	----------------------------	---	--

All original equipment manufacturers names and part numbers are used for identification purposes only, and we are in no way implying that our products are original equipment parts. Prices subject to change without notice.



## Replaces Toro Greensmaster 3100 Parts

SPA Cutting Unit - Models 04445, 04448 & 04450  
Reel & Bedknife



Item No	R&R Part No.	OEM Part No.	Description	Qty Req	Order Quantity
---------	--------------	--------------	-------------	---------	----------------

*Detail Description: Easily install and remove bed knife screws with the help of a ratchet with 3/8" drive. Tool manufactured with hardened alloy steel.:*

### Other Parts Available

10	<b>R150481</b>		Brush Assy - Brush Reel	4	
11	<b>R120-2072</b>	100-6426, 108-6487, 112-9200, 120-2072, 93-1375	Hydraulic Gear Motor	1	
<i>Tech Note: Fits Models 3150 &amp; 3250-D:</i>					
11	<b>R105-9770</b>	10-5090, 105-9770, 26-5690, 70-9800, 94-3506, 94-3507	Hydraulic Motor - Reel Quick Release	1	
<i>Tech Note: Fits Models 3000, 3050 &amp; 3100:</i>					
13	<b>R32127-46</b>	32127-46, 3296-60	Locknut	1	
14	<b>R302-5</b>	21-6010, 302-11, 302-37, 302-47, 302-5, 302-57, 302-58, 302-6, 31-0300, 32-9660, 60-0800, 62-3880, 92-4181	Fitting - Grease	6	
16	<b>R253-61</b>	253-61	Seal - Oil Reel	1	
17	<b>R10-5060</b>	10-5060	Bracket - Roller Adj	2	

All original equipment manufacturers names and part numbers are used for identification purposes only, and we are in no way implying that our products are original equipment parts. Prices subject to change without notice.





## Replaces Toro Greensmaster 3100 Parts

SPA Cutting Unit - Models 04445, 04448 & 04450  
Reel & Bedknife



Item No	R&R Part No.	OEM Part No.	Description	Qty Req	Order Quantity
22	<b>R65-8600</b>	10-5040, 65-8600	Knob - Height Adjusting	2	
24	<b>R3296-9</b>	32127-17, 3296-9	Locknut - Comb	12	
29	<b>R10-5010</b>	10-5010	Screw - Roller Adjustment	2	
30	<b>R10-5100</b>	10-5100	Nut - Splined 1-1/8 Long	1	
30	<b>R93-1394</b>	93-1394	Nut - Splined RH Thrd .812 Long	1	
38	<b>R52-2890</b>	52-2890	Bushing - Flanged	4	
39	<b>R52-2900</b>	52-2900	Washer - Nylon	2	
40	<b>R52-2940</b>	52-2940	Handle Assy	1	
41	<b>R52-2920</b>	52-2920	Pivot - Bed Bar	1	
42	<b>R62-5510</b>	52-2870, 62-5510	Bushing	4	
43	<b>R302-18</b>	302-18	Zerk - Grease Press Style	2	
44	<b>R57-4870</b>	57-4870	Handle - Adjusting Fits GM3M	1	
44	<b>R77-0330</b>	77-0330	Housing - Pivot Spa	1	
45	<b>R57-5260</b>	107-7409, 57-5260	Pivot - 1/2-20 - Bed Bar	1	
46	<b>R52-3000</b>	52-3000	Arm - Spring	1	
47	<b>R237-77</b>	237-77	O-Ring	2	
48	<b>R57-5280</b>	57-5280	Bearing - Adjusting Handle	2	
49	<b>R57-5290</b>	57-5290	Support - Thrust Bearing Fits 3M	2	
50	<b>R57-5270</b>	57-5270	Spring - Adjusting Handle	1	

All original equipment manufacturers names and part numbers are used for identification purposes only, and we are in no way implying that our products are original equipment parts. Prices subject to change without notice.



## Replaces Toro Greensmaster 3100 Parts

SPA Cutting Unit - Models 04445, 04448 & 04450  
Reel & Bedknife



Item No	R&R Part No.	OEM Part No.	Description	Qty Req	Order Quantity
51	<b>R3296-62</b>	3296-62	Locknut - 1/2-20 LH Jam	1	
52	<b>R253-84</b>	253-84, 7-0044	Seal - Micro Adj.	1	
53	<b>R257-5</b>	257-5	Washer - Thrust	1	
54	<b>R257-6</b>	257-6	Bearing - Thrust	2	
55	<b>R63-9510</b>	63-9480, 63-9510	Bushing - Rubber For Bed Bar	2	
56	<b>R52-2910</b>	52-2910	Bolt - Eccentric Bed Bar	1	
57	<b>R52-2930</b>	52-2930	Bolt - Bed Bar	1	
58	<b>R57-4940</b>	52-2780, 57-4940, 57-4940-01	Bed Bar - 13 Hole	1	
59	<b>R52-3060</b>	52-3060, 77-1060, 99-5653	Bracket - RH Rear Roller	1	
60	<b>R52-3090</b>	52-3090, 77-1080, 99-5654	Bracket - LH Rear Roller	1	
61	<b>R3290-125</b>	3290-125	Screw - Set 1/4-20 x 5/16	2	
62	<b>R302-40</b>	302-13, 302-40	Fitting - Grease	1	
65	<b>R57-5200</b>	57-5200	Shield - Grass	1	
66	<b>R57-5210</b>	57-5210	Deflector - Styrene	1	
67	<b>R3295-46</b>	3295-46	Tube - Rivet Smi Grass Shield	13	
69	<b>R441674</b>	01-173-0514, 01-173-0516, 3-7253, 3230-5	Screw - 5/16-18 x 1-3/4 Carriage	2	

All original equipment manufacturers names and part numbers are used for identification purposes only, and we are in no way implying that our products are original equipment parts. Prices subject to change without notice.



## Replaces Toro Greensmaster 3100 Parts

SPA Cutting Unit - Models 04445, 04448 & 04450  
Reel & Bedknife



Item No	R&R Part No.	OEM Part No.	Description	Qty Req	Order Quantity
71	R32153-3	119-4038, 22-12-AJFD, 32127-35, 32146-5, 32153-3, 3296-18, 3296-29, 3296-31, N/A	Locknut - 5/16-18 ESNA Zinc	2	
71	R3296-29	1-804256, 3290-357, 3296-29, 915662P	Locknut - 5/16-18 ESNA	2	
72	R150425		Bolt - Hex HD 8-32 x 5/8	12	
73	R150426	3256-21	Washer - 8 SAE	12	
74	R36-7260	36-7260	Bar - Cut Off Grass Shield	1	
75	R3256-14	24-7-BD, 32125-2, 3256-14, 3256-51, 51-2170	Washer - 10 Flat	5	
76	R3290-237	3290-237	Screw - Hx Washer HD 10-24	5	
76	R32144-73	104-2065, 32144-73	Screw - Machine Hex Washer Head	5	
77	R3296-39	32127-25, 32128-36, 3290-357, 3296-17, 3296-22, 3296-39, 915663P, 99-7443	Locknut - 3/8-16 Nylon	8	
78	R150485	2410-30	Cap - Protective Bearing Housing	1	

All original equipment manufacturers names and part numbers are used for identification purposes only, and we are in no way implying that our products are original equipment parts. Prices subject to change without notice.



## Replaces Toro Greensmaster 3100 Parts

SPA Cutting Unit - Models 04445, 04448 & 04450  
Reel & Bedknife



Item No	R&R Part No.	OEM Part No.	Description	Qty Req	Order Quantity
79	R321-4	01-150-1030, 01-178-0406, 20-3-AGD, 321-4, 3222-1	Bolt - Hex HD 1/4-20 x 3/4	4	
80	R3253-3	01-166-0070, 01-166-0410, 23-9-GD, 24-7150, 3253-3, 3256-1, 352-167	Washer - Lock 1/4	4	
81	R12-0460	12-0460	Caplug - End Cap	1	
82	R323-2	01-178-0604, 323-2	Bolt - Hex HD 3/8-16 x 1	1	
83	R10-5080	10-5080, 10-5080-01	End - Cap Reel Brg Housing	1	
84	R10-5120	10-5120	Housing - Bearing Reel	2	
<i>Detail Description: Includes R253-96 &amp; R254-72:</i>					
84	R104-3399	104-3399	Housing Assy - Bearing Reel	2	
85	R354083	104-7729, 354083	Decal - Danger	1	
86	R150475	3-6462	Screw - Bedknife Stainless 5/16-18 x 5/8	7	
<i>Detail Description: Pre-Packaged in bags of 50:</i>					
86	R150476	3-3816, 3-6462, 57-4910	Screw - Bedknife 5/16-18 x 5/8	13	
89	R94-2958	94-2958	Stud - Alloy Ball Joint	2	
96	R57-5250	57-5250	Housing - Pivot Spa	1	
96	R52-2980	52-2980	Housing - Pivot Spa	1	

All original equipment manufacturers names and part numbers are used for identification purposes only, and we are in no way implying that our products are original equipment parts. Prices subject to change without notice.



## Replaces Toro Greensmaster 3100 Parts

SPA Cutting Unit - Models 04445, 04448 & 04450  
Reel & Bedknife



Item No	R&R Part No.	OEM Part No.	Description	Qty Req	Order Quantity
97	<b>R52-2860</b>	119-4150, 52-2860	Washer - Bed Bar Pivot	1	
98	<b>R70-1200</b>	70-1200	Frame - Single Point Adj.	1	
99	<b>R3290-316</b>	3290-316, 57-3210	Bolt - Hex Tap 3/8-16 x 1-1/2	4	
99	<b>R323-53</b>	323-53, 57-3210	Bolt - Hex HD 3/8-16 x 1-3/4	4	
100	<b>R3255-9</b>	3255-9	Washer - Lock 3/8 Ext. Star	4	
101	<b>R321-5</b>	321-31, 321-5	Bolt - Hex HD 1/4-20 x 7/8	2	
102	<b>R3256-22</b>	24-9-BD, 3-1032, 3256-1, 3256-22, 93-0954, 93-0989	Washer - Flat 1/4 Yellow	4	
103	<b>R301504</b>	2296-42, 301504, 32127-24, 32128-33, 32146-17, 3296-16, 3296-42, 3296-42 , 915661P	Locknut - ESNA 1/4-20	2	
103	<b>R32128-33</b>	32128-33	Nut - 1/4-20 Flanged Serr	2	
104	<b>R285-14</b>		Plug - Pipe Frame	2	
105	<b>R3254-6</b>	01-166-0010, 01-166-0280, 01-166-0610, 3253-5, 3254-18, 3254-6, 3290-223, 48-9370	Washer - Lock 3/8	2	

All original equipment manufacturers names and part numbers are used for identification purposes only, and we are in no way implying that our products are original equipment parts. Prices subject to change without notice.





## Replaces Toro Greensmaster 3100 Parts

SPA Cutting Unit - Models 04445, 04448 & 04450  
Reel & Bedknife



Item No	R&R Part No.	OEM Part No.	Description	Qty Req	Order Quantity
106	R57-9910	57-9910	Bolt - Pivot	2	
107	R400264	01-150-0180, 01-178-0610, 20-48-AD, 20-48-AGD, 32-9160, 3224-3, 323-29, 323-7, 400264, 908035P	Bolt - Hex HD 3/8-16 x 1-1/4	2	
108	R453011	01-166-0100, 01-166-0120, 01-166-0270, 01-166-0500, 01-166-0600, 01-166-0620, 132-4593, 2356-3, 237-12, 24-10-AD, 24-11-AD, 24-11-BD, 24-12-AD, 24-12-BD, 30-9310, 32-8190, 3256-24, 3256-3, 3256-36, 3256-4, 453011, 47-9950, 48-9220, 513458, 7-0052	Washer - Flat 3/8 SAE Y/Zinc	4	
109	R52-3100	52-3100	Bolt - Eccentric Shoulder LH	1	
110	R52-3110	52-3110	Bolt - Shoulder HOC RH	1	

All original equipment manufacturers names and part numbers are used for identification purposes only, and we are in no way implying that our products are original equipment parts. Prices subject to change without notice.



## Replaces Toro Greensmaster 3100 Parts

SPA Cutting Unit - Models 04445, 04448 & 04450  
Reel & Bedknife



Item No	R&R Part No.	OEM Part No.	Description	Qty Req	Order Quantity
111	R443828	01-191-1018, 3214, 3220-6, 443828, 915089P	Nut - 5/8-18 Hex	2	
112	R237-84	237-84	Grommet - Rubber	2	
113	R32108-20	32108-20	Screw - Flat HD Cntrsunk	2	
114	R322-5	01-178-0508, 20-26-AD, 20-26-AGD, 30-9000, 322-5, 513341, 519755, 908019P, N/A	Bolt - Hex HD 5/16-18 x 1	2	
115	R3255-8	3255-8	Washer - Lock 5/16 Ext	2	
116	R187-0	3256-25, 7-0032	Washer - Flat 7/16 SAE	1	
117	R52-2990	324-25, 52-2990	Bolt - Spring Retainer	1	
118	R57-5190	32110-19, 57-5190	Screw - Adjusting	2	
119	R443818	01-191-0813, 3218-18, 3218-5	Nut - 1/2-13 Hex Jam Zinc	2	
120	R29-8870	29-8870	Washer - Adj. Handle	1	
121	R52-3010	52-3010	Nut - 1/2-28 LH Jam	2	

All original equipment manufacturers names and part numbers are used for identification purposes only, and we are in no way implying that our products are original equipment parts. Prices subject to change without notice.



## Replaces Toro Greensmaster 3100 Parts

SPA Cutting Unit - Models 04445, 04448 & 04450  
Reel & Bedknife



Item No	R&R Part No.	OEM Part No.	Description	Qty Req	Order Quantity
122	<b>R254-72</b>	01-103-0050, 01-103-0120, 01-103-0140, 1-543508, 254-71, 254-72, 40439, 62-3340, 99-4511	Cup - Bearing	2	
123	<b>R254-94</b>	1-543509, 254-94, 32-8090, 32-8240, 32-9640, 40440, 62-3330	Tapered Bearing Cone	2	
124	<b>R353-585</b>	353-585, 353-587, 354-34, 72-4380, 75-1210, 75-1270, 92-8863, 92-8864	Seal - High Pressure - Reel Motor	1	
125	<b>R253-96</b>	253-96	Seal - Oil Single Lip Reel	2	
126	<b>R114-4683</b>	114-4683	Pin - Hinge 6-1/4 Long w/ No Zerk	0	

All original equipment manufacturers names and part numbers are used for identification purposes only, and we are in no way implying that our products are original equipment parts. Prices subject to change without notice.