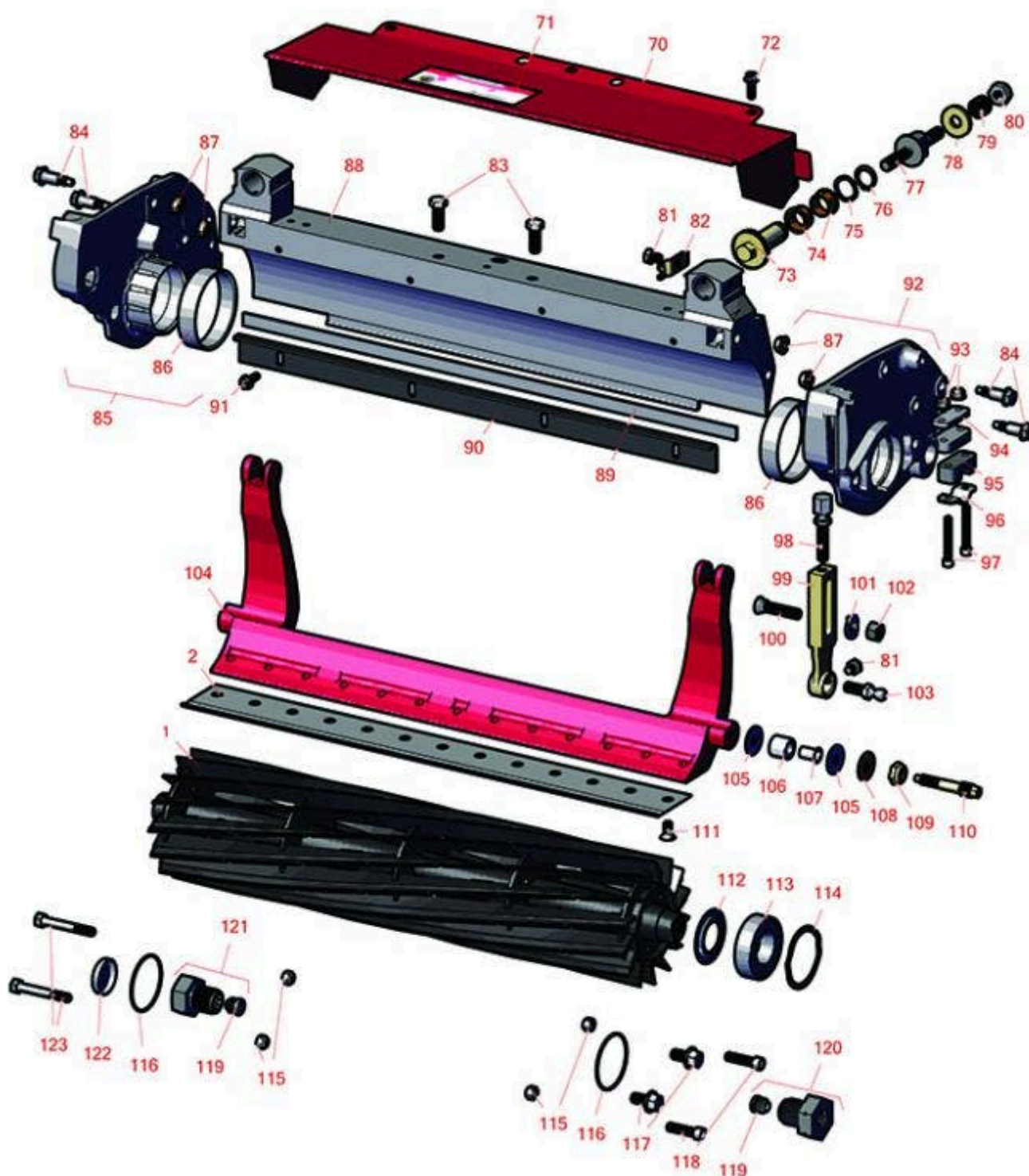




Replaces Toro Greensmaster 3150-Q Parts

DPA Cutting Unit - Models 04618, 04619 & 04624
Reel & Bedknife



All original equipment manufacturers names and part numbers are used for identification purposes only, and we are in no way implying that our products are original equipment parts. Prices subject to change without notice.



Replaces Toro Greensmaster 3150-Q Parts

DPA Cutting Unit - Models 04618, 04619 & 04624
Reel & Bedknife



Item No	R&R Part No.	OEM Part No.	Description	Qty Req	Order Quantity
---------	--------------	--------------	-------------	---------	----------------

R&R Reels, Lifetime Guaranteed

1	R119-4105	119-4105	Reel - 14 Blade	1	
---	------------------	----------	-----------------	---	--

Tech Note: Model 04624 Only:

Detail Description: R&R Reel blades are manufactured from high carbon-boron alloy steel and then hardened to RC46-49 to match the temper of our bedknives and original equipment bedknives. All R&R Reels are cylindrically ground on bearing surfaces and then relief ground. Reels are then precision computer balanced for extended bearing and reel life. R&R Products Reels are guaranteed against defects in material and workmanship for the life of the reel under normal use.:

1	R119-4104	119-4104	Reel - 11 Blade	1	
---	------------------	----------	-----------------	---	--

Tech Note: Model 04619 Only:

Detail Description: R&R Reel blades are manufactured from high carbon-boron alloy steel and then hardened to RC46-49 to match the temper of our bedknives and original equipment bedknives. All R&R Reels are cylindrically ground on bearing surfaces and then relief ground. Reels are then precision computer balanced for extended bearing and reel life. R&R Products Reels are guaranteed against defects in material and workmanship for the life of the reel under normal use.:

1	R119-4103	119-4103	Reel - 8 Blade	1	
---	------------------	----------	----------------	---	--

Tech Note: Model 04618 Only:

Detail Description: R&R Reel blades are manufactured from high carbon-boron alloy steel and then hardened to RC46-49 to match the temper of our bedknives and original equipment bedknives. All R&R Reels are cylindrically ground on bearing surfaces and then relief ground. Reels are then precision computer balanced for extended bearing and reel life. R&R Products Reels are guaranteed against defects in material and workmanship for the life of the reel under normal use.:

R&R Bedknives, Lifetime Guaranteed

2	R108-4303	104-7720, 108-4303	Bedknife - Micro Cut Extended .062 - .187 HOC	1	
---	------------------	-----------------------	--	---	--

All original equipment manufacturers names and part numbers are used for identification purposes only, and we are in no way implying that our products are original equipment parts. Prices subject to change without notice.



Replaces Toro Greensmaster 3150-Q Parts

DPA Cutting Unit - Models 04618, 04619 & 04624
Reel & Bedknife



Item No	R&R Part No.	OEM Part No.	Description	Qty Req	Order Quantity
---------	--------------	--------------	-------------	---------	----------------

Detail Description: R&R Bedknives are manufactured from high carbon-boron alloy steel and then hardened to RC46-49 to match the temper of our reel blades and original equipment reels. Bedknives are surface ground on the top and front edge and straightened three times before being packaged with oil for rust prevention. All R&R Bedknives now have an increased front edge grind for added life. All R&R Bedknives are guaranteed against defects in material and workmanship under normal use for the life of the part.:

2	R93-4263	63-8560, 66-9320, 93-4263, 93-6039	Bedknife - Tournament Cut .125 - .500 HOC	1	
---	-----------------	---	--	---	--

Detail Description: R&R Bedknives are manufactured from high carbon-boron alloy steel and then hardened to RC46-49 to match the temper of our reel blades and original equipment reels. Bedknives are surface ground on the top and front edge and straightened three times before being packaged with oil for rust prevention. All R&R Bedknives now have an increased front edge grind for added life. All R&R Bedknives are guaranteed against defects in material and workmanship under normal use for the life of the part.:

2	R150466	63-8600, 64-6393, 94-6393	Bedknife - Super Thick .312 - 1.00 HOC	1	
---	----------------	---------------------------------	---	---	--

Detail Description: R&R Bedknives are manufactured from high carbon-boron alloy steel and then hardened to RC46-49 to match the temper of our reel blades and original equipment reels. Bedknives are surface ground on the top and front edge and straightened three times before being packaged with oil for rust prevention. All R&R Bedknives now have an increased front edge grind for added life. All R&R Bedknives are guaranteed against defects in material and workmanship under normal use for the life of the part.:

2	R94-6392	62-2500, 94-6392	Bedknife - High Cut .312 - 1.00 HOC	1	
---	-----------------	---------------------	--	---	--

Detail Description: R&R Bedknives are manufactured from high carbon-boron alloy steel and then hardened to RC46-49 to match the temper of our reel blades and original equipment reels. Bedknives are surface ground on the top and front edge and straightened three times before being packaged with oil for rust prevention. All R&R Bedknives now have an increased front edge grind for added life. All R&R Bedknives are guaranteed against defects in material and workmanship under normal use for the life of the part.:

2	R93-4264	57-4960, 63-8470, 93-4264	Bedknife - Low Cut .187 - 1.00 HOC	1	
---	-----------------	---------------------------------	---------------------------------------	---	--

All original equipment manufacturers names and part numbers are used for identification purposes only, and we are in no way implying that our products are original equipment parts. Prices subject to change without notice.



Replaces Toro Greensmaster 3150-Q Parts

DPA Cutting Unit - Models 04618, 04619 & 04624
Reel & Bedknife



Item No	R&R Part No.	OEM Part No.	Description	Qty Req	Order Quantity
---------	--------------	--------------	-------------	---------	----------------

Detail Description: R&R Bedknives are manufactured from high carbon-boron alloy steel and then hardened to RC46-49 to match the temper of our reel blades and original equipment reels. Bedknives are surface ground on the top and front edge and straightened three times before being packaged with oil for rust prevention. All R&R Bedknives now have an increased front edge grind for added life. All R&R Bedknives are guaranteed against defects in material and workmanship under normal use for the life of the part.:

2	R108-4302	108-4301, 108-4302	Bedknife - Tournament Cut Extended .125 - .500 HOC	1	
---	------------------	-----------------------	---	---	--

Detail Description: R&R Bedknives are manufactured from high carbon-boron alloy steel and then hardened to RC46-49 to match the temper of our reel blades and original equipment reels. Bedknives are surface ground on the top and front edge and straightened three times before being packaged with oil for rust prevention. All R&R Bedknives now have an increased front edge grind for added life. All R&R Bedknives are guaranteed against defects in material and workmanship under normal use for the life of the part.:

2	R93-4262	65-8250, 93-4262, 93-4263	Bedknife - Micro Cut .062 - .187 HOC	1	
---	-----------------	---------------------------------	---	---	--

Detail Description: R&R Bedknives are manufactured from high carbon-boron alloy steel and then hardened to RC46-49 to match the temper of our reel blades and original equipment reels. Bedknives are surface ground on the top and front edge and straightened three times before being packaged with oil for rust prevention. All R&R Bedknives now have an increased front edge grind for added life. All R&R Bedknives are guaranteed against defects in material and workmanship under normal use for the life of the part.:

R&R Razor Tool Steel Bedknives, Lifetime Guaranteed

2	R115-1880	115-1880	Bedknife - Razor Tool Steel - 21 Micro Cut .062 - .187 HOC	1	
---	------------------	----------	---	---	--

Detail Description: R&R Razor bedknives are manufactured from premium alloy tool steel steel and then hardened to RC48-51 to match the temper of our Razor reel blades and original equipment premium series reels. Bedknives are surface ground on the top and front edge and specially packaged for rust prevention. All R&R Bedknives now have an increased front edge grind for added life. All R&R Bedknives are guaranteed against defects in material and workmanship under normal use for the life of the part. You can expect up to double the life over standard bedknives.:

2	R115-1881	115-1881	Bedknife - Razor Tool Steel - 21 Tournament Cut .125 - .500 HOC	1	
---	------------------	----------	---	---	--

All original equipment manufacturers names and part numbers are used for identification purposes only, and we are in no way implying that our products are original equipment parts. Prices subject to change without notice.



Replaces Toro Greensmaster 3150-Q Parts

DPA Cutting Unit - Models 04618, 04619 & 04624
Reel & Bedknife



Item No	R&R Part No.	OEM Part No.	Description	Qty Req	Order Quantity
---------	--------------	--------------	-------------	---------	----------------

Detail Description: R&R Razor bedknives are manufactured from premium alloy tool steel steel and then hardened to RC48-51 to match the temper of our Razor reel blades and original equipment premium series reels. Bedknives are surface ground on the top and front edge and specially packaged for rust prevention. All R&R Bedknives now have an increased front edge grind for added life. All R&R Bedknives are guaranteed against defects in material and workmanship under normal use for the life of the part. You can expect up to double the life over standard bedknives.:

Other Parts Available

70	R119-4095	119-4095	Grass Shield Assy	1
71	R354083	104-7729, 354083	Decal - Danger	1
72	R119-4012	119-4012	Screw - Hx Washer HD Self Threading	7
73	R106-5363	106-5363	Shaft - Adjusting - Bed Bar - Stainless	2
74	R106-5344	106-5344	Bushing - Flanged and Keyed	4
75	R119-4164	119-4164	Washer - Wave	2
76	R32120-93	32120-93	Snap Ring - HD	2
77	R115-7039	115-7039	Screw - Adjuster - Bedbar	2
78	R119-4155	119-4155	Washer - Hardened	2
79	R119-4156	119-4156	Spring - Compression	2
80	R3296-48	119-4039, 32146-7, 3296-34, 3296-48	Locknut - 7/16-14 ESNA	2
81	R114-9396	114-9396, 119-4067	Bolt - Hex HD 5/16-18 x 3/8	4
82	R99-2097	99-2097	Detent - Bed Bar Adjuster	2

All original equipment manufacturers names and part numbers are used for identification purposes only, and we are in no way implying that our products are original equipment parts. Prices subject to change without notice.



Replaces Toro Greensmaster 3150-Q Parts

DPA Cutting Unit - Models 04618, 04619 & 04624
Reel & Bedknife



Item No	R&R Part No.	OEM Part No.	Description	Qty Req	Order Quantity
83	R323-6	01-150-0010, 01-178-0608, 20-47-AD, 20-47-AGD, 3224-2, 323-6, 49-3510, 908034P, 908332	Bolt - Hex HD 3/8-16 x 1 GR5 YZ	2	
84	R115-7042	115-7042	Bolt-Shoulder, Flange	4	
85	R119-4007	119-4007	Side Plate Assy-RH Incl R117-6619	1	
86	R117-6619	117-6619	Bushing	2	
87	R104-8300	104-8300, 104-8300 , 119-4041	Locknut - 5/16-18 Flanged Y/Zinc	4	
88	R119-9303	105-5799, 119-9303	Frame - Crossmember	1	
89	R106-2619	106-2619	Seal - Strip	1	
90	R115-3303-03	115-3303-03	Bar - Cutoff	1	
91	R131-6150	131-6150	Screw- 1/4-20 x 3/4 Hx Wh Thread Forming	4	
92	R119-4005	119-4005	Side Plate Assy-LH Incl R117-6619	1	
93	R119-4040	119-4040	Nut - 1/4-20 Fl Locknut	4	
94	R105-5711	105-5711, 119-4165	Shim - Roller	2	
95	R105-5710	105-5710, 119-4166	Spacer - Roller	2	
96	R105-5712	105-5712, 119-4157	Retainer - Roller	2	

All original equipment manufacturers names and part numbers are used for identification purposes only, and we are in no way implying that our products are original equipment parts. Prices subject to change without notice.



Replaces Toro Greensmaster 3150-Q Parts

*DPA Cutting Unit - Models 04618, 04619 & 04624
Reel & Bedknife*



Item No	R&R Part No.	OEM Part No.	Description	Qty Req	Order Quantity
97	R119-4035	119-4035	Bolt - 1/4-20 x 1 3/4 Soc HD Cap Scr	4	
98	R110-7352	110-7352	Screw - HOC 2 5/8 Stainless	2	
99	R115-7041	115-7041	Bracket - Front Roller 5 1/4 in	2	
100	R99-3773	99-3773	Bolt- Plow 3/8-16 x 1 3/4	2	
101	R104-2603	104-2603, 119-4158	Washer - HOC Bracket	2	
102	R115-7193	115-7193	Nut-HOC	2	
103	R94-2958	94-2958	Stud - Alloy Ball Joint	2	
104	R106-2648-01	106-2648-01	Bed Bar	1	
105	R52-2900	52-2900	Washer - Nylon	4	
106	R119-4153	119-4153	Bushing - Rubber	2	
107	R52-2890	52-2890	Bushing - Flanged	2	
108	R52-2860	119-4150, 52-2860	Washer - Bed Bar Pivot	2	
109	R3296-28	119-4154, 140-9234, 32127-34, 32128-7, 32128-8, 32136-7, 3296-28	Nut - 1/2-20 ESNA Jam	2	
110	R117-9493	117-9493	Bolt - Bed Bar - Hardened	2	
111	R119-4151	119-4151	Screw - Bedknife 5/16-18 x 17/32	13	
112	R115-3299	115-3299	Seal- Flocked	2	
113	R115-3296	115-3296	Bearing	2	

All original equipment manufacturers names and part numbers are used for identification purposes only, and we are in no way implying that our products are original equipment parts. Prices subject to change without notice.



Replaces Toro Greensmaster 3150-Q Parts

*DPA Cutting Unit - Models 04618, 04619 & 04624
Reel & Bedknife*



Item No	R&R Part No.	OEM Part No.	Description	Qty Req	Order Quantity
114	R105-5700	105-5700, 115-5258	Wave Washer - Bearing	1	
115	R32153-3	119-4038, 22-12-AJFD, 32127-35, 32146-5, 32153-3, 3296-18, 3296-29, 3296-31, N/A	Locknut - 5/16-18 ESNA Zinc	4	
115	R3296-29	1-804256, 3290-357, 3296-29, 915662P	Locknut - 5/16-18 ESNA	4	
119	R360-0398	360-0398	O-Ring	2	
117	R110-1718	110-1718	Screw-HHF	2	
118	R434036	3274-18	Screw - Soc HD 5/16-18 x 1-1/4	2	
119	R120-3220	120-3220	Plug - Plastic	2	
120	R120-3221	120-3221	Reel Nut Assy - LH	1	
121	R120-3222	117-9512, 120-3222	Reel Nut Assy - RH	1	
122	R105-5708	105-5708, 121-4609	Plug - Expansion	1	
123	R322-11	01-150-0390, 01-178-0518, 20-31-AD, 322-11, 3223-7	Bolt - 5/16-18 x 2 1/4 Hx HD	2	

All original equipment manufacturers names and part numbers are used for identification purposes only, and we are in no way implying that our products are original equipment parts. Prices subject to change without notice.