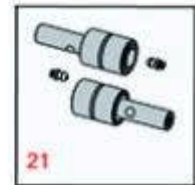
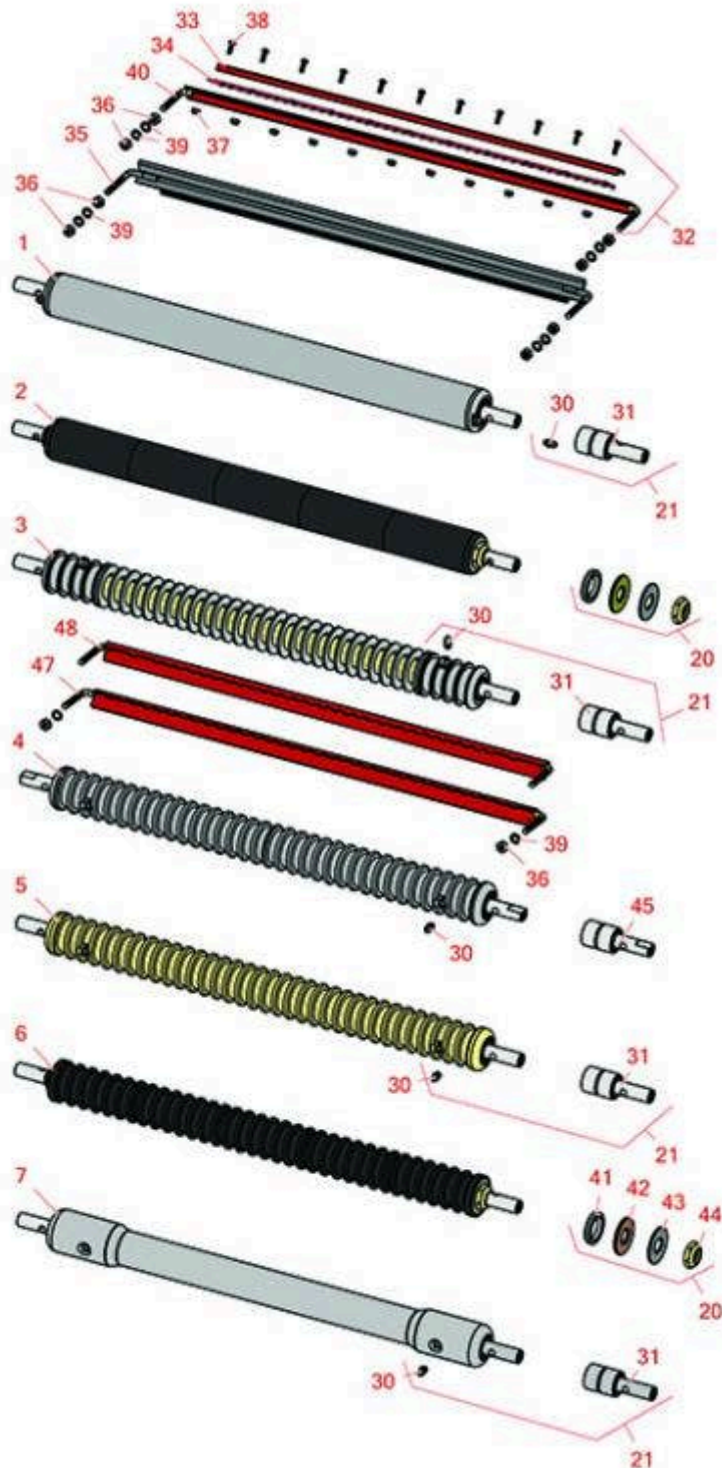




# Replaces Toro Greensmaster 3150-Q

## Parts

4-Bolt Cutting Unit - Models 04404  
Front Rollers



All original equipment manufacturers names and part numbers are used for identification purposes only, and we are in no way implying that our products are original equipment parts. Prices subject to change without notice.



# Replaces Toro Greensmaster 3150-Q Parts

4-Bolt Cutting Unit - Models 04404  
Front Rollers



Item No	R&R Part No.	OEM Part No.	Description	Qty Req	Order Quantity
---------	--------------	--------------	-------------	---------	----------------

## R&R Front Rollers

1	R21-6440	20-8950, 21-6440, 23-5110, 52-3170, Nov-80	Roller - Smooth Tubular Steel	0	
---	----------	--	-------------------------------	---	--

*Detail Description: This tubular steel roller uses greasable "water-pump" style bearings. :*

2	R150340		Roller - Smooth UHMW Polyethylene	0	
---	---------	--	-----------------------------------	---	--

*Detail Description: Machined from solid UHMW, this low maintenance roller uses a 1" solid stainless steel shaft and requires no grease. UHMW material prevents build-up of debris.:*

3	R21-6540	21-6540	Roller - Grooved Repairable Steel	0	
---	----------	---------	-----------------------------------	---	--

*Detail Description: Constructed with greasable "water-pump" style bearings, this roller can be repaired by unscrewing the ends and replacing the series of washers and spacers.:*

4	R88-6790	88-6790	Roller - Grooved Machined Solid Aluminum	1	
---	----------	---------	--	---	--

*Detail Description: Machined from solid aluminum, this light weight machined grooved roller uses greasable "water-pump" style bearings.:*

5	R52-3200	12-0840, 52-3200, 71-1550	Roller - Grooved Machined Solid Steel	0	
---	----------	---------------------------------	---------------------------------------	---	--

*Detail Description: Machined from solid steel, this heavy weight roller uses greasable "water-pump" style bearings.:*

6	R150335		Roller - Grooved UHMW Polyethylene	0	
---	---------	--	------------------------------------	---	--

*Detail Description: Machined from solid UHMW, this low maintenance roller rotates around a 1" solid stainless steel shaft and requires no bearings or grease. Patented groove design and smooth UHMW material prevents build-up of debris.:*

7	R21-6470	10-5000, 21-6470, 52-3590	Roller - Swaged Machined Solid Aluminum	0	
---	----------	---------------------------------	---	---	--

All original equipment manufacturers names and part numbers are used for identification purposes only, and we are in no way implying that our products are original equipment parts. Prices subject to change without notice.



# Replaces Toro Greensmaster 3150-Q Parts

4-Bolt Cutting Unit - Models 04404  
Front Rollers



Item No	R&R Part No.	OEM Part No.	Description	Qty Req	Order Quantity
---------	--------------	--------------	-------------	---------	----------------

*Detail Description: Constructed with "water-pump" style bearings, this roller is machined from solid aluminum and contacts the ground only on the outer 2-7/8" of the roller.:*

## Overhaul Kits

20	<b>R101395</b>		Overhaul Kit - UHMW Roller	0	
<i>Detail Description: Fits all R&amp;R 2" Dia. Black UHMW Polyethylene Rollers. Includes 10 ea.: R150322 Roll Pins; 2 ea.: R3296-15 Locknuts, R150347T Teflon Seals, R150333 Thrust Washers, &amp; R150334A Bronze Thrust Washers:</i>					

21	<b>R107-1588</b>	107-1588	Overhaul Kit - Roller	0	
<i>Detail Description: Includes 2 ea.: R302-5 Grease Fittings &amp; R52-3180 Bearings:</i>					

## Other Parts Available

30	<b>R302-5</b>	21-6010, 302-11, 302-37, 302-47, 302-5, 302-57, 302-58, 302-6, 31-0300, 32-9660, 60-0800, 62-3880, 92-4181	Fitting - Grease	6	
31	<b>R52-3180</b>	21-6410, 52-3180	Bearing - Front Roller	2	
32	<b>R11-0070</b>	11-0070	Comb - Assy	1	
33	<b>R8-2520</b>	8-2520, 8-2520-01	Support - Comb	1	
34	<b>R8-2530</b>	8-2530	Comb - Urethane	1	
35	<b>R33-1000</b>	33-1000	Brush Assy	1	

All original equipment manufacturers names and part numbers are used for identification purposes only, and we are in no way implying that our products are original equipment parts. Prices subject to change without notice.



# Replaces Toro Greensmaster 3150-Q Parts

4-Bolt Cutting Unit - Models 04404  
Front Rollers



Item No	R&R Part No.	OEM Part No.	Description	Qty Req	Order Quantity
36	R3219-1	01-158-0590, 01-188-0428, 3219-1	Nut - 1/4-28	4	
37	R3296-9	32127-17, 3296-9	Locknut - Comb	11	
38	R3249-3	3249-3	Screw - Comb	11	
39	R3254-8	3254-8	Washer - Lock 1/4 Int Star Z	4	
40	R11-0069		Frame - Only Comb Assy	1	
41	R150347T		Seal - Nonstick Lip	2	
42	R150334A		Washer - Thrust SAE660 Bronze	2	
43	R150333		Washer - Flat Keyed Outer SS	2	
44	R3296-15	116-7306, 32118-5, 32127-23, 32127-47, 3296-15	Locknut - 3/4-16 Nylon Jam	2	
45	R52-3210	52-3210	Bearing - w/Milled Flat	2	
47	R151359		Scraper - R&R Grooved Roller .625 in Spacing	1	
<i>Detail Description: Fits R&amp;R R88-6790 &amp; R52-3200 Rollers:</i>					
48	R65-8340-01	65-8340, 65-8340-01	Scraper - Grooved Roller .43 in Spacing	1	
<i>Detail Description: Fits OEM 93-9045 grooved roller:</i>					

All original equipment manufacturers names and part numbers are used for identification purposes only, and we are in no way implying that our products are original equipment parts. Prices subject to change without notice.