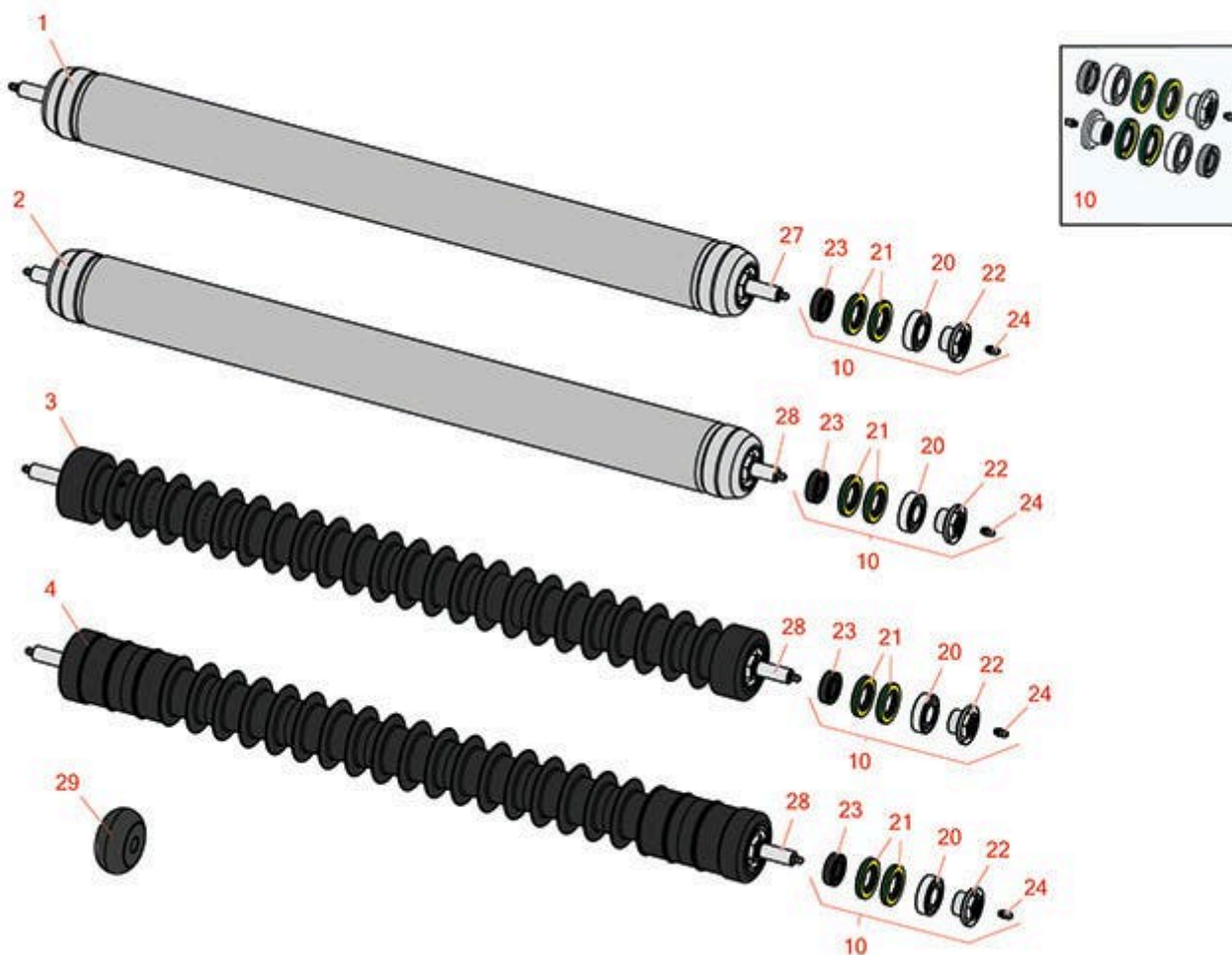




Replaces Toro Reelmaster 3105-D Parts

32in DPA Cutting Unit - Models 03191

Rollers



All original equipment manufacturers names and part numbers are used for identification purposes only, and we are in no way implying that our products are original equipment parts. Prices subject to change without notice.



Replaces Toro Reelmaster 3105-D Parts

32in DPA Cutting Unit - Models 03191
Rollers



| Item No | R&R Part No. | OEM Part No. | Description | Qty Req | Order Quantity |
|---------|--------------|--------------|-------------|---------|----------------|
|---------|--------------|--------------|-------------|---------|----------------|

| | | | | | |
|---|------------------|----------|-----------------------------------------------|---|--|
| 1 | R112-8961 | 112-8961 | Roller - Smooth Rear Steel - Long - 32" Units | 0 | |
|---|------------------|----------|-----------------------------------------------|---|--|

Detail Description: Constructed with a through shaft, this heavy-duty roller uses greasable ball bearings.:

| | | | | | |
|---|------------------|----------|-----------------------------------------|---|--|
| 2 | R114-9384 | 114-9384 | Roller - Smooth Front Steel - 32" Units | 0 | |
|---|------------------|----------|-----------------------------------------|---|--|

Detail Description: Constructed with a through shaft, this heavy-duty roller uses greasable ball bearings.:

| | | | | | |
|---|-----------------|----------|-------------------------------------------------------|---|--|
| 3 | R1503985 | 117-0990 | Roller - Fusion Grooved UHMW Polyethylene - 32" Units | 0 | |
|---|-----------------|----------|-------------------------------------------------------|---|--|

Tech Note: 3" Dia.:

Detail Description: Fusion Rollers combine the best features of our UHMW plastic rollers with a heavy-duty internal bearing system. Machined from solid UHMW plastic that prevents build-up of debris. This roller has a patented deep groove design and turns on precision stainless ball bearings and double seals for added life.:

| | | | | | |
|---|-----------------|----------|----------------------------------------------------------------|---|--|
| 4 | R1503986 | 119-0640 | Roller - Fusion Grooved UHMW Polyethylene Shoulder - 32" Units | 0 | |
|---|-----------------|----------|----------------------------------------------------------------|---|--|

Tech Note: 3" Dia.:

Detail Description: Fusion Rollers combine the best features of our UHMW plastic rollers with a heavy duty internal bearing system. Machined from solid UHMW plastic that prevents build-up of debris. This roller has a patented deep groove design in the center along with shallow grooves on each end to reduce marking in wet conditions and turns on precision stainless ball bearings and double seals for added life.:

Overhaul Kits

| | | | | | |
|----|------------------|----------|-----------------------|---|--|
| 10 | R114-5430 | 114-5430 | Overhaul Kit - Roller | 0 | |
|----|------------------|----------|-----------------------|---|--|

Detail Description: Includes 4 ea.: R112-7494 Seals; 2 ea.: R302-5 Grease Zerks, R114-3717 Seals, R112-5290 Bearings & R114-3745 Locknuts:

Other Parts Available

All original equipment manufacturers names and part numbers are used for identification purposes only, and we are in no way implying that our products are original equipment parts. Prices subject to change without notice.



Replaces Toro Reelmaster 3105-D Parts

32in DPA Cutting Unit - Models 03191
Rollers



| Item No | R&R Part No. | OEM Part No. | Description | Qty Req | Order Quantity |
|---------|--------------|------------------------------------------------------------------------------------------------------------------------------------------------|---------------------------------|---------|----------------|
| 20 | R112-5290 | 112-5290, 251--346, 251-346, 72-5430 | Bearing - Stainless | 2 | |
| 21 | R112-7494 | 112-7494 | Seal | 4 | |
| 22 | R114-3745 | 106-6939, 108-3151, 114-3745, 114-5411 | Locknut - Bearing - Stainless | 2 | |
| 23 | R114-3717 | 114-3717 | Seal | 2 | |
| 24 | R302-5 | 21-6010, 302-11, 302-37, 302-47, 302-5, 302-57, 302-58, 302-6, 31-0300, 32-9660, 60-0800, 62-3880, 92-4181 | Fitting - Grease | 2 | |
| 27 | R117-0987 | 117-0987 | Shaft - Front Roller | 1 | |
| 28 | R112-8964 | 112-8964 | Shaft - Long Solid Roller F & R | 1 | |
| 29 | R119-4276 | 119-4276 | Roller - Tipper | 2 | |

All original equipment manufacturers names and part numbers are used for identification purposes only, and we are in no way implying that our products are original equipment parts. Prices subject to change without notice.