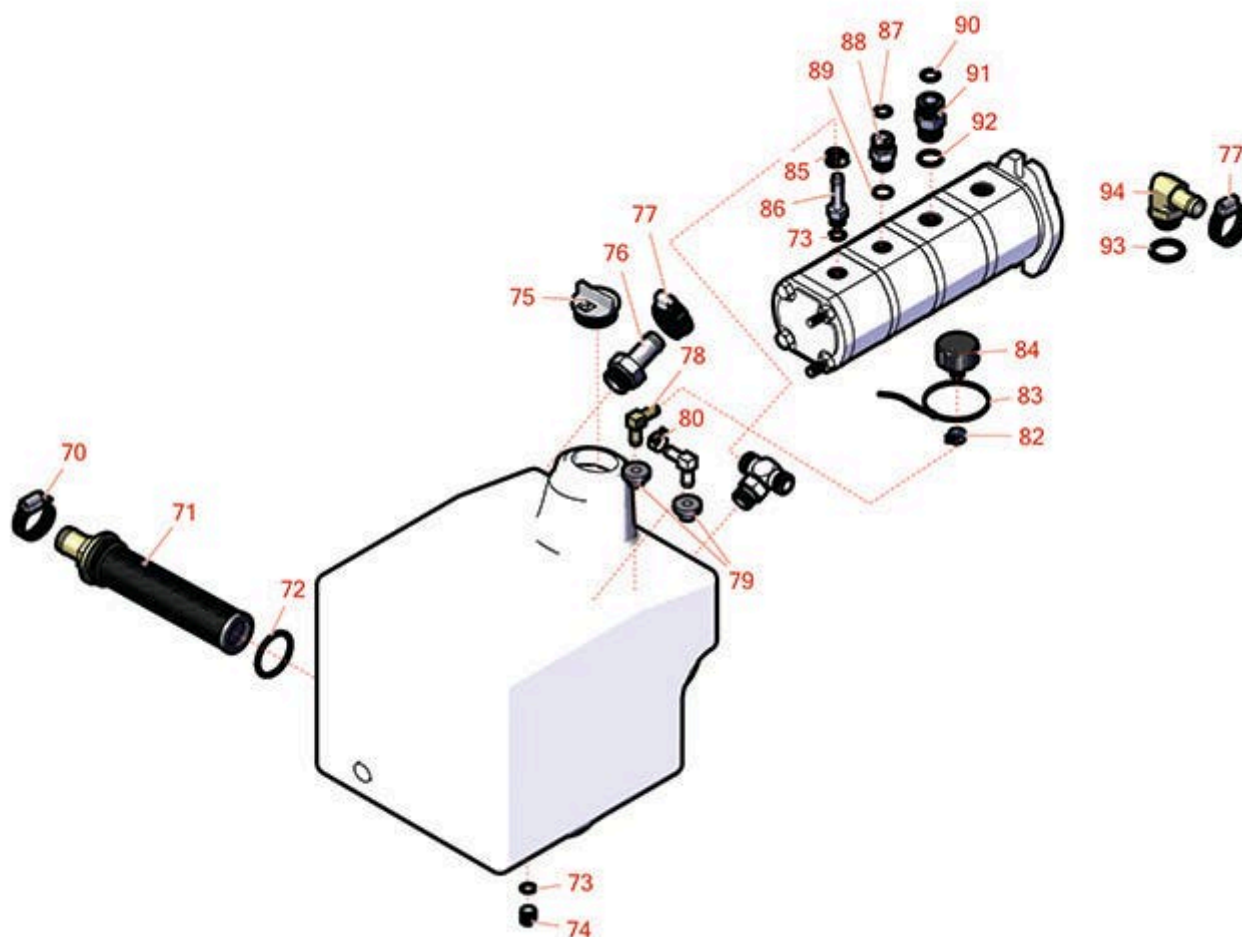




# Replaces Toro Groundsmaster 7210 Parts

Zero-Turn Mower with 62in Recycler Deck - Model 30365  
Hydraulic Assembly



All original equipment manufacturers names and part numbers are used for identification purposes only, and we are in no way implying that our products are original equipment parts. Prices subject to change without notice.



# Replaces Toro Groundsmaster 7210 Parts

Zero-Turn Mower with 62in Recycler Deck - Model 30365  
Hydraulic Assembly



Item No	R&R Part No.	OEM Part No.	Description	Qty Req	Order Quantity
<b>Other Parts Available</b>					
70	<b>R2412-34</b>	2412-34, 31-0120	Clamp - Hose .75-1.5	2	
<i>Detail Description: Stainless steel hose clamp with 5/16" slotted hex head, heat treated carbon steel, plated with zinc plus trivalent chromate for long lasting protection.:</i>					
71	<b>R104-7546</b>	104-7546, 104-7546`	Strainer - Tank	1	
72	<b>R340-136</b>	340-136	O-Ring	1	
73	<b>R237-42</b>	237-42, 31-4160	O-Ring	2	
74	<b>R353-989</b>	353-989	Plug - Hex - Hollow	1	
75	<b>R93-7498</b>	93-7498	Plug-Oil	1	
76	<b>R354-73</b>	354-73	Fitting-Straight	1	
77	<b>R2412-129</b>	2412-129, 94-3188, 94-3189, 94-3193, 94-3203, 94-3204	Clamp - Worm 9/16-1 1/4	4	
78	<b>R46-6550</b>	46-6550	Fitting - Elbow 90	1	
79	<b>R46-6560</b>	46-6560	Bushing	2	
80	<b>R2412-98</b>	2412-98	Clamp - Spring - Hose 1/4	2	
82	<b>R92-2379</b>	92-2379	Clamp - Hose	2	
83	<b>R3290-379</b>	3290-336, 3290-379	Cable Tie - 6in	2	
84	<b>R68-6150</b>	58-9070, 68-6150	Breather	1	

All original equipment manufacturers names and part numbers are used for identification purposes only, and we are in no way implying that our products are original equipment parts. Prices subject to change without notice.



# Replaces Toro Groundsmaster 7210 Parts

*Zero-Turn Mower with 62in Recycler Deck - Model 30365  
Hydraulic Assembly*



Item No	R&R Part No.	OEM Part No.	Description	Qty Req	Order Quantity
85	<b>R2412-108</b>	2412-108, 97406	Clamp - Worm - 1/4 - Stainless	2	
86	<b>R353-979</b>	353-979	Fitting - Straight	1	
87	<b>R237-30</b>	23-6320, 237-30	O-Ring - Seal	1	
88	<b>R340-4</b>	340-4	Hydraulic Fitting - Male Connector	1	
89	<b>R237-79</b>	237-79	O-Ring	1	
90	<b>R237-65</b>	237-65, 237.65	O-Ring	1	
91	<b>R340-7</b>	340-7	Adapter	1	
92	<b>R237-80</b>	237-80, 327-80	O-Ring	1	
93	<b>R237-81</b>	237-81, 237.81, 327-81	O-Ring	1	
94	<b>R353-987</b>	353-987	Hydraulic Fitting - 90 Deg	2	

All original equipment manufacturers names and part numbers are used for identification purposes only, and we are in no way implying that our products are original equipment parts. Prices subject to change without notice.