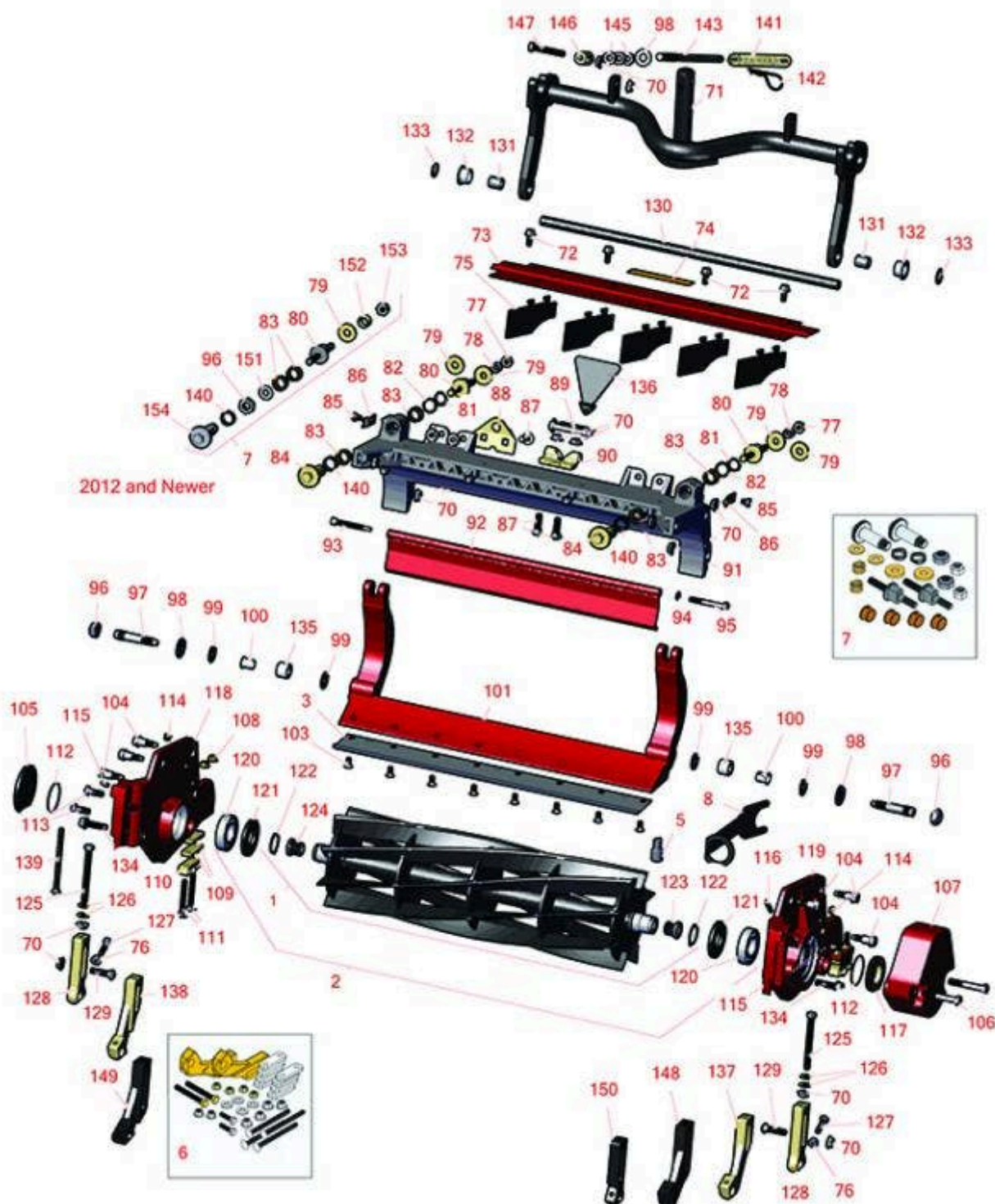




# Replaces Toro Reelmaster 5510-D Parts

DPA Cutting Unit - Models 03681 & 03682

Reel & Bedknife



All original equipment manufacturers names and part numbers are used for identification purposes only, and we are in no way implying that our products are original equipment parts. Prices subject to change without notice.



# Replaces Toro Reelmaster 5510-D Parts

DPA Cutting Unit - Models 03681 & 03682

Reel & Bedknife



Item No	R&R Part No.	OEM Part No.	Description	Qty Req	Order Quantity
---------	--------------	--------------	-------------	---------	----------------

## R&R Reels, Lifetime Guaranteed

1	<b>R127-2077</b>	127-2077	Reel - 5 Blade Radial 22x7	1	
---	------------------	----------	----------------------------	---	--

*Detail Description: R&R Reel blades are manufactured from high carbon-boron alloy steel and then hardened to RC46-49 to match the temper of our bedknives and original equipment bedknives. All R&R Reels are cylindrically ground on bearing surfaces and then relief ground. Reels are then precision computer balanced for extended bearing and reel life. R&R Products Reels are guaranteed against defects in material and workmanship for the life of the reel under normal use.:*

1	<b>R133-8209</b>		Reel - 5 Blade Razor Series Radial Low Drag 22x7	1	
---	------------------	--	---	---	--

*Detail Description: R&R Razor Reels are manufactured from a special high alloy steel and then hardened to RC48-51 to match the temper of our Razor bedknives and original equipment premium series bedknives. All R&R Reels are cylindrically ground on bearing surfaces, relief ground and precision computer balanced for extended bearing and reel life. R&R Products Reels are guaranteed against defects in material and workmanship for the life of the reel under normal use. You can expect up to double the life from Razor reels over standard reels.:*

1	<b>R107-3264</b>	107-3264	Reel - 8 Blade 22x7	1	
---	------------------	----------	---------------------	---	--

*Detail Description: R&R Reel blades are manufactured from high carbon-boron alloy steel and then hardened to RC46-49 to match the temper of our bedknives and original equipment bedknives. All R&R Reels are cylindrically ground on bearing surfaces and then relief ground. Reels are then precision computer balanced for extended bearing and reel life. R&R Products Reels are guaranteed against defects in material and workmanship for the life of the reel under normal use.:*

1	<b>R108-9073</b>	108-9073	Reel - 8 Blade 22x7	1	
---	------------------	----------	---------------------	---	--

*Detail Description: R&R Reel blades are manufactured from high carbon-boron alloy steel and then hardened to RC46-49 to match the temper of our bedknives and original equipment bedknives. All R&R Reels are cylindrically ground on bearing surfaces and then relief ground. Reels are then precision computer balanced for extended bearing and reel life. R&R Products Reels are guaranteed against defects in material and workmanship for the life of the reel under normal use.:*

1	<b>R127-2084</b>	127-2084	Reel - 8 Blade Radial Low Drag 22x7	1	
---	------------------	----------	--	---	--

All original equipment manufacturers names and part numbers are used for identification purposes only, and we are in no way implying that our products are original equipment parts. Prices subject to change without notice.



## Replaces Toro Reelmaster 5510-D Parts

DPA Cutting Unit - Models 03681 & 03682

Reel & Bedknife



Item No	R&R Part No.	OEM Part No.	Description	Qty Req	Order Quantity
---------	--------------	--------------	-------------	---------	----------------

*Detail Description: R&R Reel blades are manufactured from high carbon-boron alloy steel and then hardened to RC46-49 to match the temper of our bedknives and original equipment bedknives. All R&R Reels are cylindrically ground on bearing surfaces and then relief ground. Reels are then precision computer balanced for extended bearing and reel life. R&R Products Reels are guaranteed against defects in material and workmanship for the life of the reel under normal use.:*

1	<b>R117-0980</b>	117-0980	Reel - 11 Blade 22x7	1
---	------------------	----------	----------------------	---

*Detail Description: R&R Reel blades are manufactured from high carbon-boron alloy steel and then hardened to RC46-49 to match the temper of our bedknives and original equipment bedknives. All R&R Reels are cylindrically ground on bearing surfaces and then relief ground. Reels are then precision computer balanced for extended bearing and reel life. R&R Products Reels are guaranteed against defects in material and workmanship for the life of the reel under normal use.:*

1	<b>R108-9074</b>	108-9074	Reel - 11 Blade 22x7	1
---	------------------	----------	----------------------	---

*Detail Description: R&R Reel blades are manufactured from high carbon-boron alloy steel and then hardened to RC46-49 to match the temper of our bedknives and original equipment bedknives. All R&R Reels are cylindrically ground on bearing surfaces and then relief ground. Reels are then precision computer balanced for extended bearing and reel life. R&R Products Reels are guaranteed against defects in material and workmanship for the life of the reel under normal use.:*

1	<b>R127-2085</b>	127-2085	Reel - 11 Blade Radial Low Drag 22x7	1
---	------------------	----------	--------------------------------------	---

*Detail Description: R&R Reel blades are manufactured from high carbon-boron alloy steel and then hardened to RC46-49 to match the temper of our bedknives and original equipment bedknives. All R&R Reels are cylindrically ground on bearing surfaces and then relief ground. Reels are then precision computer balanced for extended bearing and reel life. R&R Products Reels are guaranteed against defects in material and workmanship for the life of the reel under normal use.:*

1	<b>R127-0294</b>	127-0294	Reel - 11 Blade Razor Series Forward Swept Low Drag 22x7	1
---	------------------	----------	--	---

*Detail Description: R&R Razor Reels are manufactured from a special high alloy steel and then hardened to RC48-51 to match the temper of our Razor bedknives and original equipment premium series bedknives. All R&R Reels are cylindrically ground on bearing surfaces, relief ground and precision computer balanced for extended bearing and reel life. R&R Products Reels are guaranteed against defects in material and workmanship for the life of the reel under normal use. You can expect up to double the life from Razor reels over standard reels.:*

All original equipment manufacturers names and part numbers are used for identification purposes only, and we are in no way implying that our products are original equipment parts. Prices subject to change without notice.



## Replaces Toro Reelmaster 5510-D Parts

DPA Cutting Unit - Models 03681 & 03682  
Reel & Bedknife



Item No	R&R Part No.	OEM Part No.	Description	Qty Req	Order Quantity
2	<b>R137-8437</b>	137-8437	Reel - 5 Blade Razor Series Radial Low Drag (RR) w/Bearings and Seals 22x7	1	
<i>Detail Description: R&amp;R Razor Reels are manufactured from a special high alloy steel and then hardened to RC48-51 to match the temper of our Razor bedknives and original equipment premium series bedknives. All R&amp;R Reels are cylindrically ground on bearing surfaces, relief ground and precision computer balanced for extended bearing and reel life. R&amp;R Products Reels are guaranteed against defects in material and workmanship for the life of the reel under normal use. You can expect up to double the life from Razor reels over standard reels.:</i>					
2	<b>R137-8432</b>	137-8432	Reel - 8 Blade Radial w/Bearings and Seals 22x7	1	
<i>Detail Description: R&amp;R Reel blades are expertly crafted from premium high carbon-boron alloy steel, heat-treated to perfectly complement both R&amp;R and OEM bedknives. Each reel undergoes precision cylindrical grinding on bearing surfaces, followed by relief grinding for optimal performance. Advanced computer balancing ensures extended reel and bearing life. Backed by our lifetime guarantee against defects in materials and craftsmanship under normal use, R&amp;R Reels deliver unmatched durability and cutting precision you can trust.:</i>					
2	<b>R137-8438</b>	137-8438	Reel - 8 Blade Razor Series Radial Low Drag (RR) w/Bearings and Seals 22x7	1	
<i>Detail Description: R&amp;R Razor Reels are manufactured from a special high alloy steel and then hardened to RC48-51 to match the temper of our Razor bedknives and original equipment premium series bedknives. All R&amp;R Reels are cylindrically ground on bearing surfaces, relief ground and precision computer balanced for extended bearing and reel life. R&amp;R Products Reels are guaranteed against defects in material and workmanship for the life of the reel under normal use. You can expect up to double the life from Razor reels over standard reels.:</i>					
2	<b>R133-8211</b>	133-8211	Reel - 8 Blade Razor Series Radial w/Bearings and Seals 22x7	1	
<i>Detail Description: R&amp;R Razor Reels are manufactured from a special high alloy steel and then hardened to RC48-51 to match the temper of our Razor bedknives and original equipment premium series bedknives. All R&amp;R Reels are cylindrically ground on bearing surfaces, relief ground and precision computer balanced for extended bearing and reel life. R&amp;R Products Reels are guaranteed against defects in material and workmanship for the life of the reel under normal use. You can expect up to double the life from Razor reels over standard reels.:</i>					
2	<b>R137-8433</b>	137-8433	Reel - 11 Blade Radial w/Bearings and Seals 22x7	1	

All original equipment manufacturers names and part numbers are used for identification purposes only, and we are in no way implying that our products are original equipment parts. Prices subject to change without notice.





## Replaces Toro Reelmaster 5510-D Parts

DPA Cutting Unit - Models 03681 & 03682  
Reel & Bedknife



Item No	R&R Part No.	OEM Part No.	Description	Qty Req	Order Quantity
---------	--------------	--------------	-------------	---------	----------------

*Detail Description:* R&R Reel blades are expertly crafted from premium high carbon-boron alloy steel, heat-treated to perfectly complement both R&R and OEM bedknives. Each reel undergoes precision cylindrical grinding on bearing surfaces, followed by relief grinding for optimal performance. Advanced computer balancing ensures extended reel and bearing life. Backed by our lifetime guarantee against defects in materials and craftsmanship under normal use, R&R Reels deliver unmatched durability and cutting precision you can trust.:

2	<b>R137-8439</b>	137-8439	Reel - 11 Blade Razor Series Forward Swept Low Drag (Fsr) w/Bearings and Seals 22x7	1	
---	------------------	----------	---	---	--

*Detail Description:* R&R Razor Reels are manufactured from a special high alloy steel and then hardened to RC48-51 to match the temper of our Razor bedknives and original equipment premium series bedknives. All R&R Reels are cylindrically ground on bearing surfaces, relief ground and precision computer balanced for extended bearing and reel life. R&R Products Reels are guaranteed against defects in material and workmanship for the life of the reel under normal use. You can expect up to double the life from Razor reels over standard reels.:

### R&R Bedknives, Lifetime Guaranteed

3	<b>R108-9096</b>	108-9096	Bedknife - Standard	1	
---	------------------	----------	---------------------	---	--

*Detail Description:* R&R Bedknives are manufactured from high carbon-boron alloy steel and then hardened to RC46-49 to match the temper of our reel blades and original equipment reels. Bedknives are surface ground on the top and front edge and straightened three times before being packaged with oil for rust prevention. All R&R Bedknives now have an increased front edge grind for added life. All R&R Bedknives are guaranteed against defects in material and workmanship under normal use for the life of the part.:

3	<b>R110-4084</b>	110-4084	Bedknife - Low Cut	1	
---	------------------	----------	--------------------	---	--

*Detail Description:* R&R Bedknives are manufactured from high carbon-boron alloy steel and then hardened to RC46-49 to match the temper of our reel blades and original equipment reels. Bedknives are surface ground on the top and front edge and straightened three times before being packaged with oil for rust prevention. All R&R Bedknives now have an increased front edge grind for added life. All R&R Bedknives are guaranteed against defects in material and workmanship under normal use for the life of the part.:

3	<b>R120-1640</b>	120-1640	Bedknife - Low Cut Extended	1	
---	------------------	----------	-----------------------------	---	--

*Detail Description:* R&R Bedknives are manufactured from high carbon-boron alloy steel and then hardened to RC46-49 to match the temper of our reel blades and original equipment reels. Bedknives are surface ground on the top and front edge and straightened three times before being packaged with oil for rust prevention. All R&R Bedknives now have an increased front edge grind for added life. All R&R Bedknives are guaranteed against defects in material and workmanship under normal use for the life of the part.:

All original equipment manufacturers names and part numbers are used for identification purposes only, and we are in no way implying that our products are original equipment parts. Prices subject to change without notice.



## Replaces Toro Reelmaster 5510-D Parts

DPA Cutting Unit - Models 03681 & 03682  
Reel & Bedknife



Item No	R&R Part No.	OEM Part No.	Description	Qty Req	Order Quantity
---------	--------------	--------------	-------------	---------	----------------

3	<b>R110-4074</b>	110-4074	Bedknife - High Cut	1	
---	------------------	----------	---------------------	---	--

*Detail Description: R&R Bedknives are manufactured from high carbon-boron alloy steel and then hardened to RC46-49 to match the temper of our reel blades and original equipment reels. Bedknives are surface ground on the top and front edge and straightened three times before being packaged with oil for rust prevention. All R&R Bedknives now have an increased front edge grind for added life. All R&R Bedknives are guaranteed against defects in material and workmanship under normal use for the life of the part.:*

### R&R Razor Tool Steel Bedknives, Lifetime Guaranteed

3	<b>R108-9095</b>	108-9095, 137-0833	Bedknife - Razor Tool Steel - 22 High Cut	1	
---	------------------	-----------------------	--	---	--

*Detail Description: R&R Razor bedknives are manufactured from premium alloy tool steel steel and then hardened to RC48-51 to match the temper of our Razor reel blades and original equipment premium series reels. Bedknives are surface ground on the top and front edge and specially packaged for rust prevention. All R&R Bedknives now have an increased front edge grind for added life. All R&R Bedknives are guaranteed against defects in material and workmanship under normal use for the life of the part. You can expect up to double the life over standard bedknives.:*

3	<b>R137-0832</b>	125-2771, 127-7132, 137-0832	Bedknife - Razor Tool Steel - 3/8 x 22 Lowcut	1	
---	------------------	------------------------------------	--	---	--

3	<b>R119-4280</b>	119-4280	Bedknife - Razor Tool Steel - 22 x 3/8 Extended	1	
---	------------------	----------	--	---	--

*Detail Description: R&R Razor bedknives are manufactured from premium alloy tool steel steel and then hardened to RC48-51 to match the temper of our Razor reel blades and original equipment premium series reels. Bedknives are surface ground on the top and front edge and specially packaged for rust prevention. All R&R Bedknives now have an increased front edge grind for added life. All R&R Bedknives are guaranteed against defects in material and workmanship under normal use for the life of the part. You can expect up to double the life over standard bedknives.:*

### Overhaul Kits & Service Tools

5	<b>R51-0880</b>	51-0880	Bedknife Screw Driver Tool	0	
---	-----------------	---------	----------------------------	---	--

*Detail Description: Easily install and remove bed knife screws with the help of a ratchet with 3/8" drive. Tool manufactured with hardened alloy steel.:*

6	<b>R110-9600</b>	110-9600	High HOC Kit	1	
---	------------------	----------	--------------	---	--

All original equipment manufacturers names and part numbers are used for identification purposes only, and we are in no way implying that our products are original equipment parts. Prices subject to change without notice.



## Replaces Toro Reelmaster 5510-D Parts

DPA Cutting Unit - Models 03681 & 03682  
Reel & Bedknife



Item No	R&R Part No.	OEM Part No.	Description	Qty Req	Order Quantity
---------	--------------	--------------	-------------	---------	----------------

*Detail Description: Includes 1 ea.: R120-0404, R120-0405 & 2 ea: R112-7451, R322-16, R445722 & 4 ea.: R106-9758, R104-8300, R453011, R104-8301 & 8 ea: R106-3925:*

7	<b>R120-7230</b>	120-7230	Overhaul Kit - Fits DPA Units	1
---	------------------	----------	-------------------------------	---

*Detail Description: Incl 2 ea.: R108-0015, R115-7039, R119-4155, R120-5116, R120-5118, R120-5120, R3296-33, R3296-48 & 4 ea: R106-5344:*

8	<b>R117-0975</b>	117-0975	Tool- Reel Bearing Installation	1
---	------------------	----------	---------------------------------	---

### Other Parts Available

70	<b>R32128-43</b>	30-8990, 32128-43, 3290-357	Nut - Flanged Whiz - 3/8-16	7
----	------------------	-----------------------------------	-----------------------------	---

*Tech Note: Fits 2008-2010:*

70	<b>R32128-40</b>	32128-40	Nut- 3/8-16 Hx Flange	7
----	------------------	----------	-----------------------	---

*Tech Note: Fits 2006-2007:*

71	<b>R107-7433</b>	107-7433	Carrier Frame Assy	1
----	------------------	----------	--------------------	---

72	<b>R3234-5</b>	3234-5, 62-3310	Bolt - 5/16-18x3/4 Hx Ser Was HD	4
----	----------------	--------------------	----------------------------------	---

73	<b>R107-2996</b>	107-2996	Grass Shield - Front	1
----	------------------	----------	----------------------	---

74	<b>R93-6688</b>	93-6688	Decal - Warning	1
----	-----------------	---------	-----------------	---

75	<b>R110-1706</b>	110-1706	Deflector	5
----	------------------	----------	-----------	---

76	<b>R445722</b>	30-8980, 32128-2, 32128-20, 32128-20	Nut - Serrated Washer	4
----	----------------	---	-----------------------	---

77	<b>R33025-00</b>	32025-00, 33025-00	Locknut - 10mm x 1.5 Jam	2
----	------------------	-----------------------	--------------------------	---

78	<b>R99-3755</b>	99-3755	Spring - Bed Bar Adjusting	2
----	-----------------	---------	----------------------------	---

79	<b>R99-2098</b>	99-2098	Washer - Bed Bar Adjuster	2
----	-----------------	---------	---------------------------	---

All original equipment manufacturers names and part numbers are used for identification purposes only, and we are in no way implying that our products are original equipment parts. Prices subject to change without notice.



## Replaces Toro Reelmaster 5510-D Parts

DPA Cutting Unit - Models 03681 & 03682

Reel & Bedknife



Item No	R&R Part No.	OEM Part No.	Description	Qty Req	Order Quantity
<i>Tech Note: Fits Up to 2012:</i>					
79	<b>R119-4155</b>	119-4155	Washer - Hardened	2	
<i>Tech Note: Fits 2012 &amp; Newer:</i>					
80	<b>R99-2096</b>	99-2096	Screw - Bed Bar Adjustment - M10 Thrd 1 End	2	
<i>Tech Note: Fits Up to 2012:</i>					
80	<b>R115-7039</b>	115-7039	Screw - Adjuster - Bedbar	2	
<i>Tech Note: Fits 2012 &amp; Newer:</i>					
81	<b>R32120-93</b>	32120-93	Snap Ring - HD	2	
82	<b>R106-5335</b>	106-5335	Wave Washer - Reel Adjusting	2	
83	<b>R106-5344</b>	106-5344	Bushing - Flanged and Keyed	4	
84	<b>R106-5363</b>	106-5363	Shaft - Adjusting - Bed Bar - Stainless	2	
<i>Tech Note: Fits Up to 2012:</i>					
85	<b>R114-9396</b>	114-9396, 119-4067	Bolt - Hex HD 5/16-18 x 3/8	2	
85	<b>R322-26</b>	322-26	Bolt - Hx HD 5/16-18 x 3/8	2	
86	<b>R99-2097</b>	99-2097	Detent - Bed Bar Adjuster	2	
87	<b>R3231-25</b>	01-173-0610, 30-9970, 3231-25, 3231-3, 900064P	Bolt - Carriage 3/8-16 x 1-1/4	4	
88	<b>R110-4069</b>	110-4069	Bracket	1	
89	<b>R107-7400</b>	107-7400	Pin - Lynch	1	
90	<b>R110-4058</b>	110-4058	Bracket - Chain	1	

All original equipment manufacturers names and part numbers are used for identification purposes only, and we are in no way implying that our products are original equipment parts. Prices subject to change without notice.





## Replaces Toro Reelmaster 5510-D Parts

DPA Cutting Unit - Models 03681 & 03682

Reel & Bedknife



Item No	R&R Part No.	OEM Part No.	Description	Qty Req	Order Quantity
91	<b>R107-3258</b>	107-3258	Frame	1	
92	<b>R107-7779-01</b>	107-7779-01	Grass Shield Assy - Rear	1	
93	<b>R107-7773</b>	107-7773	Bolt - Soc HD Cap 5/16-18 x 2-1/2	1	
94	<b>R3256-74</b>	3256-74	Washer - Flat	1	
95	<b>R322-14</b>	01-150-0830, 01-178-0524, 30-8900, 322-14	Bolt - Hex HD 5/16-18 x 3 GR5	1	
96	<b>R3296-33</b>	3296-33	Locknut - 5/8-18 ESNA Jam	2	
97	<b>R106-9623</b>	106-9623	Bolt - Bedbar	2	
98	<b>R453017</b>	01-166-0050, 01-166-0240, 01-166-0800, 24-13-AD, 24-14-AD, 32-8110, 3256-26, 3256-6, 453017, 69-8980, 87-7270	Washer - Flat 1/2	2	
98	<b>R455012</b>	3256-26, 41-8440	Washer - Flat 1/2 x 3/4	1	
98	<b>R87-7270-01</b>	87-7270	Washer - Flat 1/2	1	
99	<b>R61-1950</b>	61-1950	Washer - Nylon - Bed Bar	4	
100	<b>R56-9520</b>	56-9520	Bushing - Nyliner	2	
101	<b>R107-3273-01</b>	107-3273-01	Bed Bar - Fits OEM Units Only	1	
101	<b>R150904</b>		Bed Bar - Fits R&R Units Only	1	

All original equipment manufacturers names and part numbers are used for identification purposes only, and we are in no way implying that our products are original equipment parts. Prices subject to change without notice.



## Replaces Toro Reelmaster 5510-D Parts

DPA Cutting Unit - Models 03681 & 03682  
Reel & Bedknife



Item No	R&R Part No.	OEM Part No.	Description	Qty Req	Order Quantity
103	<b>R150476</b>	3-3816, 3-6462, 57-4910	Screw - Bedknife 5/16-18 x 5/8	8	
104	<b>R107-2979</b>	107-2979	Bolt - Shoulder	6	
105	<b>R94-2703</b>	94-2703	Plug - Plastic Spindle Housing	1	
106	<b>R101526</b>	01-150-0970, 01-178-0620, 20-53-AGD, 321-11, 3224-8, 323-11, 323-12, 323-31, 323-4, 323-47	Bolt - Hex HD 3/8-16 x 2-1/2 GR5	2	
107	<b>R108-4269-01</b>	108-4269-01	Weight	1	
108	<b>R104-8300</b>	104-8300, 104-8300 , 119-4041	Locknut - 5/16-18 Flanged Y/Zinc	4	
109	<b>R106-3925</b>	106-3925	Shim - 1/4 - Rear Roller HOC	4	
110	<b>R106-3924</b>	106-3924	Bracket - Rear Roller	2	
111	<b>RP17609-2</b>	106-9758, 3230-7	Bolt - Carriage 5/16-18 x 1-1/2	4	
112	<b>R112-6967</b>	112-6967	O-Ring	2	
113	<b>R323-6</b>	01-150-0010, 01-178-0608, 20-47-AD, 20-47-AGD, 3224-2, 323-6, 49-3510, 908034P, 908332	Bolt - Hex HD 3/8-16 x 1 GR5 YZ	2	

All original equipment manufacturers names and part numbers are used for identification purposes only, and we are in no way implying that our products are original equipment parts. Prices subject to change without notice.



## Replaces Toro Reelmaster 5510-D Parts

DPA Cutting Unit - Models 03681 & 03682

Reel & Bedknife



Item No	R&R Part No.	OEM Part No.	Description	Qty Req	Order Quantity
114	<b>R170714</b>	302-34, 302-39, 62-3520	Fitting - Pressure Relief	2	
115	<b>R302-5</b>	21-6010, 302-11, 302-37, 302-47, 302-5, 302-57, 302-58, 302-6, 31-0300, 32-9660, 60-0800, 62-3880, 92-4181	Fitting - Grease	2	
116	<b>R107-7447</b>	107-7447	Set Screw - 1/4 x 1-1/4 Sq HD	1	
117	<b>R107-2954</b>	107-2954	Nut - Bearing Adjuster	1	
118	<b>R108-9083</b>	108-9083	Side Plate - RH - Fits OEM Units Only	1	
118	<b>R150903</b>		Side Plate - RH - Fits R&R Units Only	1	
119	<b>R108-9082</b>	108-9082	Side Plate - LH - Fits OEM Units Only	1	
119	<b>R150902</b>		Side Plate - LH - Fits R&R Units Only	1	
120	<b>R93-2489</b>	93-2489	Bearing - Reel	2	
121	<b>R107-4028</b>	105-6757, 107-4028	Seal - Grease	2	
122	<b>R92-2601</b>	92-2601	Snap Ring	2	
123	<b>R107-3276</b>	107-3276	Insert - Threaded - LH - 9 Tooth	1	

All original equipment manufacturers names and part numbers are used for identification purposes only, and we are in no way implying that our products are original equipment parts. Prices subject to change without notice.



## Replaces Toro Reelmaster 5510-D Parts

DPA Cutting Unit - Models 03681 & 03682

Reel & Bedknife



Item No	R&R Part No.	OEM Part No.	Description	Qty Req	Order Quantity
124	<b>R107-3275</b>	107-3275	Insert - Threaded - RH - 9 Tooth	1	
125	<b>R107-4026</b>	107-4026	Bolt - Hex Tap 3/8-16 x 3-3/4	2	
126	<b>R453011</b>	01-166-0100, 01-166-0120, 01-166-0270, 01-166-0500, 01-166-0600, 01-166-0620, 132-4593, 2356-3, 237-12, 24-10-AD, 24-11-AD, 24-11-BD, 24-12-AD, 24-12-BD, 30-9310, 32-8190, 3256-24, 3256-3, 3256-36, 3256-4, 453011, 47-9950, 48-9220, 513458, 7-0052	Washer - Flat 3/8 SAE Y/Zinc	4	
127	<b>R322-16</b>	322-16, Apr-00	Bolt - Hex HD 5/16-18 x 1-1/8	2	
128	<b>R107-2952</b>	107-2952	Bracket - Front Roller	2	
129	<b>R3231-4</b>	01-157-0440, 01-173-0612, 3231-4	Bolt - Carriage 3/8-16 x 1-1/2	2	
130	<b>R108-4284</b>	108-4284	Shaft - Support	1	
131	<b>R108-4279</b>	108-4279	Spacer - Frame	2	
132	<b>R93-2877</b>	93-2877	Bushing - Flanged	2	

All original equipment manufacturers names and part numbers are used for identification purposes only, and we are in no way implying that our products are original equipment parts. Prices subject to change without notice.



## Replaces Toro Reelmaster 5510-D Parts

DPA Cutting Unit - Models 03681 & 03682  
Reel & Bedknife



Item No	R&R Part No.	OEM Part No.	Description	Qty Req	Order Quantity
133	<b>R67-9410</b>	67-9410	Washer - Clevis Pin	1	
134	<b>R3234-19</b>	3234-19	Bolt - Hex Washer 3/8-16x1-3/4	2	
135	<b>R106-9618</b>	106-9618	Bushing - Rubber	2	
136	<b>R110-4088-03</b>	110-4088-03, 119-8010-03	Kickstand	1	
137	<b>R108-4213</b>	108-4213	Bracket- HOC - LH - Groomer	1	
138	<b>R108-4214</b>	108-4214	Bracket-HOC - RH - Groomer	1	
139	<b>R106-9758</b>		Bolt - Carriage 5/16x4	4	
140	<b>R120-5116</b>	120-5116	Washer - Wave	2	
<i>Tech Note: 2012 &amp; Newer:</i>					
141	<b>R110-4079</b>	110-4079	Spring	1	
142	<b>R92-2762</b>	92-2762	Pin - Snap	1	
143	<b>R115-2007</b>	107-7437, 115-2007	Rod - Spring	1	
145	<b>R443818</b>	01-191-0813, 3218-18, 3218-5	Nut - 1/2-13 Hex Jam Zinc	3	
146	<b>R99-8662</b>	99-8662	Tube - Spring	1	
147	<b>R104-3396</b>	104-3396	Bolt - Hex HD 3/8-16 x 2-1/4	1	
148	<b>R120-0404</b>	120-0404	Bracket- High HOC - LH	1	
<i>Detail Description: Fits 2011 &amp; Newer:</i>					
149	<b>R120-0405</b>	120-0405	Bracket - High HOC - RH	1	
<i>Detail Description: Fits 2011 &amp; Newer:</i>					

All original equipment manufacturers names and part numbers are used for identification purposes only, and we are in no way implying that our products are original equipment parts. Prices subject to change without notice.





## Replaces Toro Reelmaster 5510-D Parts

DPA Cutting Unit - Models 03681 & 03682

Reel & Bedknife



Item No	R&R Part No.	OEM Part No.	Description	Qty Req	Order Quantity
---------	--------------	--------------	-------------	---------	----------------

150	<b>R125-2796</b>	125-2796	Bracket- Front HOC	2	
-----	------------------	----------	--------------------	---	--

*Detail Description: Fits 2013 & Newer:*

151	<b>R108-0015</b>	108-0015	Washer - Flat	2	
-----	------------------	----------	---------------	---	--

152	<b>R120-5120</b>	120-5120	Spring - Compression	2	
-----	------------------	----------	----------------------	---	--

153	<b>R3296-48</b>	119-4039, 32146-7, 3296-34, 3296-48	Locknut - 7/16-14 ESNA	2	
-----	-----------------	--	------------------------	---	--

154	<b>R120-5118</b>	120-5118	Shaft - Adjuster	2	
-----	------------------	----------	------------------	---	--

*Detail Description: 2012 & Newer:*

All original equipment manufacturers names and part numbers are used for identification purposes only, and we are in no way implying that our products are original equipment parts. Prices subject to change without notice.