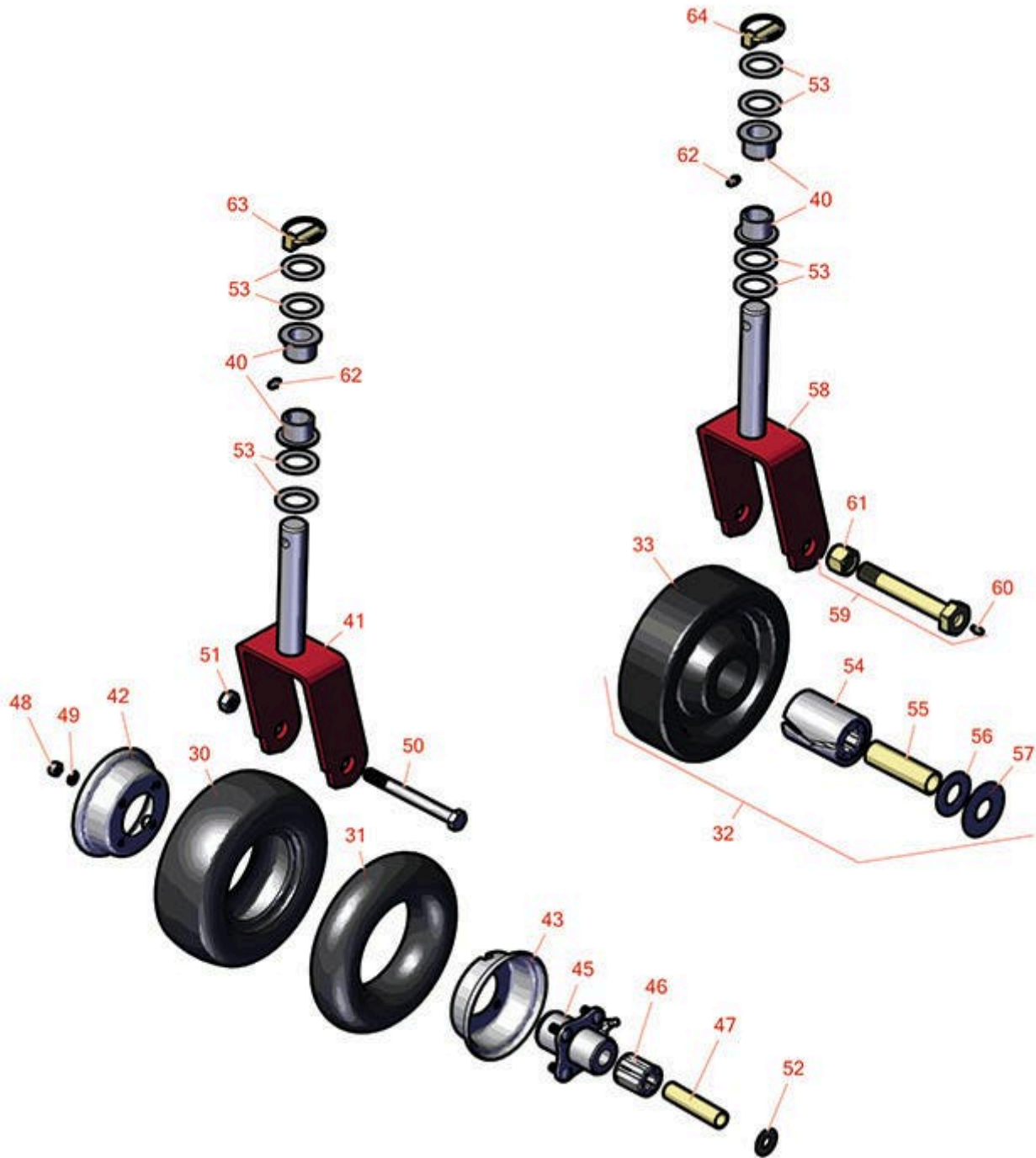




Replaces Toro Groundsmaster 3320 Parts

Caster Wheels - Model 30555



All original equipment manufacturers names and part numbers are used for identification purposes only, and we are in no way implying that our products are original equipment parts. Prices subject to change without notice.



Replaces Toro Groundsmaster 3320 Parts

Caster Wheels - Model 30555



Item No	R&R Part No.	OEM Part No.	Description	Qty Req	Order Quantity
Tires					
30	RCT5120081	68-8960	Tire - 8x3.00-4 Nhs (4 Ply) Carlisle Smooth	2	
31	R68-8950	68-8950	Tube - Castor Wheel 9x3.50-4 TR87	2	
32	R27-1050	27-1050, 46-8230	Wheel Assy	2	
33	R27-1190	27-1190	Wheel Only - Gm 52 Deck	2	
Other Parts Available					
40	R94-1291	94-1291	Bushing - Flanged	4	
40	R28-9290	28-9290	Bushing - Steel Castor	4	
41	R68-8900-01	68-8900, 68-8900-01	Caster Fork - Use w/Pneumatic Tire	2	
<i>Tech Note: Ser # 29000001-315999999:</i>					
42	R68-8930	68-8930	Wheel - Half Male	1	
43	R68-8920	68-8920	Wheel - Half w/Valve Hole	1	
45	R68-8940	68-8940	Hub Assy - w/Brgs	1	
46	R62-5570	62-5570	Bearing - Castor Wheel	1	
47	R68-8980	68-8980	Bushing - Spanner Wheel	2	
48	R3219-2	01-188-0524, 22-12-BJKD, 3219-2, 915720	Nut - 5/16-24 Zinc	4	

All original equipment manufacturers names and part numbers are used for identification purposes only, and we are in no way implying that our products are original equipment parts. Prices subject to change without notice.



Replaces Toro Groundsmaster 3320 Parts

Caster Wheels - Model 30555



Item No	R&R Part No.	OEM Part No.	Description	Qty Req	Order Quantity
49	R3253-4	01-166-0110, 01-166-0510, 23-10-GD, 24-7170, 30-8520, 3253-4, 48-9350, 48-9360, 48-9570, 68-9420, 99-7577	Washer - Lock 5/16 Zinc	4	
50	R325-19	01-150-1450, 01-158-1260, 01-178-0840, 20-99-AGD, 325-19	Bolt - Hex HD 1/2-13 x 5	2	
51	R32146-13	01-189-0813, 20-8260, 22-15-AJFD, 32146-13, 32153-16, 32153-5	Locknut - 1/2-13	2	
51	R32153-5	32153-5	Locknut - 1/2-13	2	
52	R453017	01-166-0050, 01-166-0240, 01-166-0800, 24-13-AD, 24-14-AD, 32-8110, 3256-26, 3256-6, 453017, 69-8980, 87-7270	Washer - Flat 1/2	4	
52	R3256-26	01-166-0540, 01-166-0820, 17-2530, 24-13-BD, 30-8570, 3256-26, 356206, 48-9390	Washer - 1/2 in	4	

All original equipment manufacturers names and part numbers are used for identification purposes only, and we are in no way implying that our products are original equipment parts. Prices subject to change without notice.



Replaces Toro Groundsmaster 3320 Parts

Caster Wheels - Model 30555



Item No	R&R Part No.	OEM Part No.	Description	Qty Req	Order Quantity
52	R87-7270-01	87-7270	Washer - Flat 1/2	4	
53	R3-6781	3-6781	Washer - Thrust - Castor Wheel	8	
54	R27-1210	27-1210	Bearing - w/Sleeve	2	
55	R27-1200	27-1200, 46-8640, 54-8860	Spacer - Front Deck Wheel	2	
56	R27-1180	27-1180	Washer - Brg. Retainer	4	
57	R27-1170	27-1170	Washer - Thrust	4	
58	R40-0370	40-0370	Caster Fork -Use w/Solid Wheel	2	
<i>Tech Note: Ser # 4000001-4999999:</i>					
59	R46-8140	46-8140	Axle - Assy w/Nut	2	
60	R1728-B		Zerk - Grease Press 3/16	2	
61	R32153-6	32153-6	Locknut - 3/4-10 ESNA Zinc	2	
62	R302-5	21-6010, 302-11, 302-37, 302-47, 302-5, 302-57, 302-58, 302-6, 31-0300, 32-9660, 60-0800, 62-3880, 92-4181	Fitting - Grease	2	
63	R283-71	283-71	Pin - Lynch Heavy Duty	2	
64	R3290-384	3290-384	Pin - Lynch Heavy Duty	2	
65	R283-55	283-55	Clevis Pin - 1/2 x 3	4	

All original equipment manufacturers names and part numbers are used for identification purposes only, and we are in no way implying that our products are original equipment parts. Prices subject to change without notice.



Replaces Toro Groundsmaster 3320 Parts

Caster Wheels - Model 30555



Item No	R&R Part No.	OEM Part No.	Description	Qty Req	Order Quantity
66	R3290-355	01-159-0050, 3290-355, 58-5370	Pin - Bridge - Snap	4	
67	R62-5580	62-5530, 62-5580	Bearing - Flanged - Caster	4	
68	R66-9302	3234-20, 66-9302	Screw - HHF, Whiz	6	
69	R32128-40	32128-40	Nut- 3/8-16 Hx Flange	6	
70	R32144-14	32104-32, 32104-49, 32144-14	Bolt - Hex Washer 5/16-18 x 5/8	4	
71	R3290-317	3290-317	Washer - Wave	2	
72	R3296-2	32127-10, 3296-2, 9157404	Nut - #10 Lock	4	
73	R700414	302-11, 302-19, 302-4, 32-8170	Zerk - Grease 1/4-28 45 Deg	1	
74	R302-62	302-62	Fitting - Grease - Extended Shank	2	
75	R302-40	302-13, 302-40	Fitting - Grease	2	

All original equipment manufacturers names and part numbers are used for identification purposes only, and we are in no way implying that our products are original equipment parts. Prices subject to change without notice.