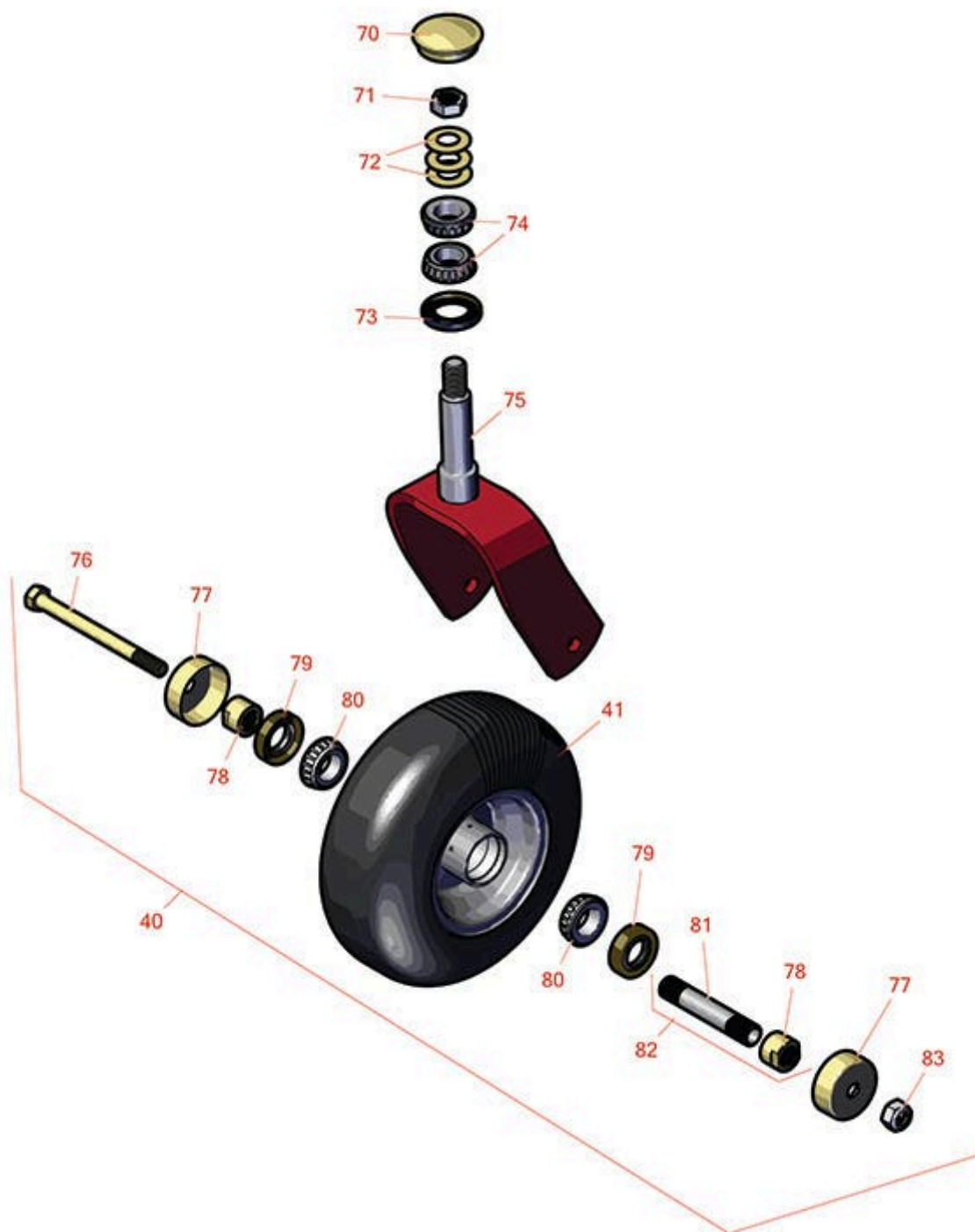




Replaces Toro GrandStand Mower Parts

Mower with 122cm Deck - Models 74504TE
Caster Wheel



All original equipment manufacturers names and part numbers are used for identification purposes only, and we are in no way implying that our products are original equipment parts. Prices subject to change without notice.



Replaces Toro GrandStand Mower Parts

Mower with 122cm Deck - Models 74504TE

Caster Wheel



Item No	R&R Part No.	OEM Part No.	Description	Qty Req	Order Quantity
---------	--------------	--------------	-------------	---------	----------------

Tires & Wheels

0	TIRES		Click Here to View Complete Tire Selection	0	
40	R130-4558	112-3810, 112-8310, 130-4558	Wheel-Tire and Bearing Assy	2	
41	R130-4563	110-9965, 130-4563	Wheel and Tire Assy	2	

Other Parts Available

70	R103-4882	103-4882	Grease Cap - Castor	2	
71	R3296-51	3296-51, 3296-81	Nut - Nylon Lock 3/4-10 Gr 8	2	
72	R1-633508	1-633508	Washer - Spring Disc	6	
73	R116-5647	116-5647	Seal - Grease	4	
74	R254-94	1-543509, 254-94, 32-8090, 32-8240, 32-9640, 40440, 62-3330	Tapered Bearing Cone	4	
75	R121-7988-01	121-7988-01	Fork - Caster	2	
76	R325-20	01-150-1250, 01-178-0848, 325-20	Bolt - Hx HD 1/2-13 x 6	2	
77	R103-2768	103-2768	Guard - Seal	4	
78	R103-3051	103-3051	Spacer - Nut - Hardened	4	
79	R103-0063	103-0063	Seal - Grease	4	

All original equipment manufacturers names and part numbers are used for identification purposes only, and we are in no way implying that our products are original equipment parts. Prices subject to change without notice.



Replaces Toro GrandStand Mower Parts

Mower with 122cm Deck - Models 74504TE

Caster Wheel



Item No	R&R Part No.	OEM Part No.	Description	Qty Req	Order Quantity
80	R254-78	01-102-0060, 01-102-0130, 1-633585, 254-78, 32-7790, 32-9580, 93-4813	Tapered Bearing Cone	4	
81	R103-3157	103-3157	Axle - Caster Wheel	2	
82	R126-5359	126-5359	Caster Axle Assy w/Bushing	1	
83	R3296-25	30-3380, 32127-21, 32127-31, 3290-160, 3290-33, 3296-13, 3296-25, 3296-45, 329645	Locknut - 1/2-13 Heavy ESNA	2	

All original equipment manufacturers names and part numbers are used for identification purposes only, and we are in no way implying that our products are original equipment parts. Prices subject to change without notice.