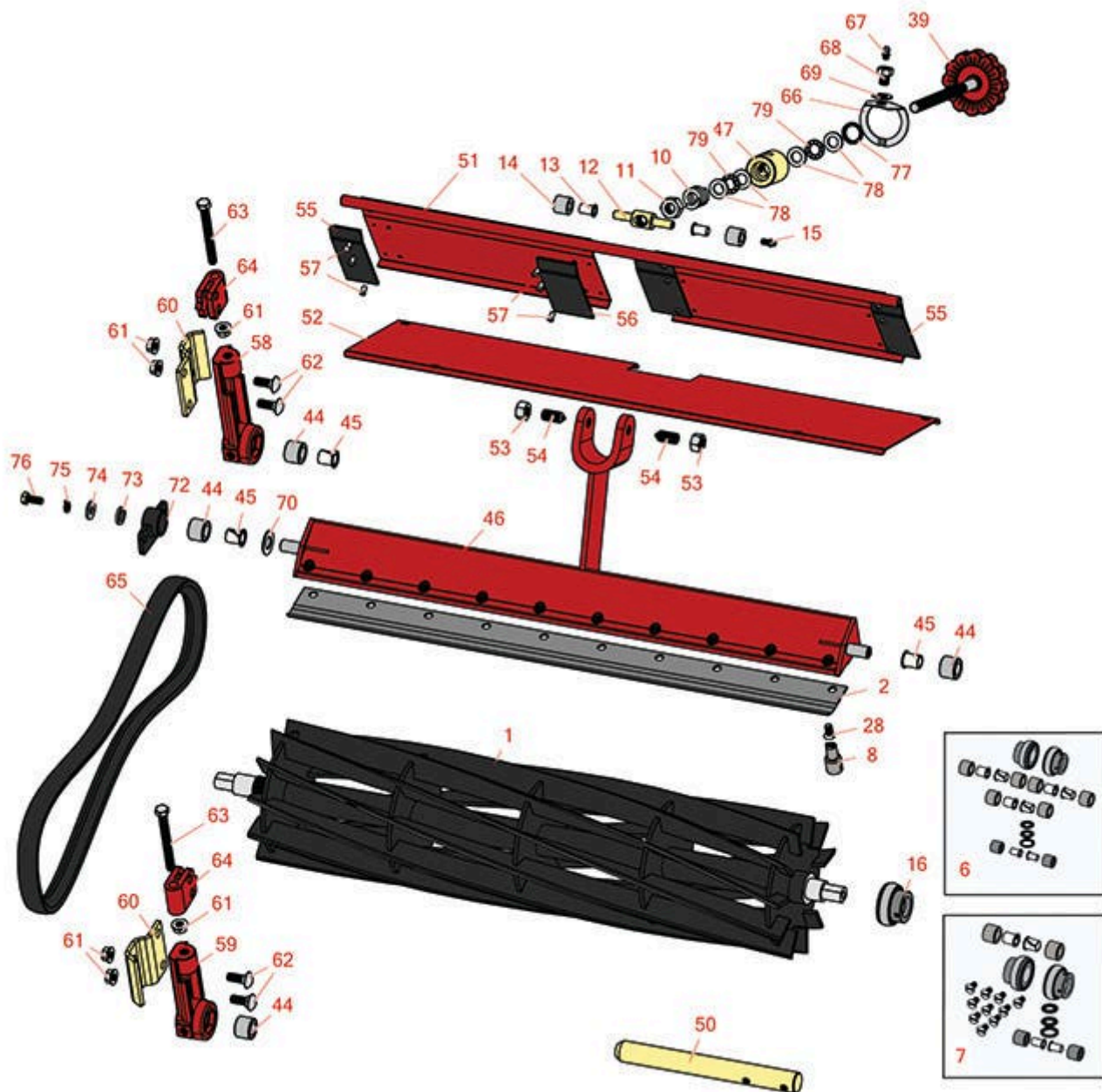




Replaces Toro Reelmaster 216 Parts

Traction Unit
Reel & Bedknife



All original equipment manufacturers names and part numbers are used for identification purposes only, and we are in no way implying that our products are original equipment parts. Prices subject to change without notice.



Replaces Toro Reelmaster 216 Parts

Traction Unit
Reel & Bedknife



| Item No | R&R Part No. | OEM Part No. | Description | Qty Req | Order Quantity |
|---------|--------------|--------------|-------------|---------|----------------|
|---------|--------------|--------------|-------------|---------|----------------|

R&R Reels, Lifetime Guaranteed

| | | | | | |
|---|-----------------|---------------------|------------------------|---|--|
| 1 | R12-7059 | 12-7059, 61-0260 | Reel - 5 Blade RH/Rear | 2 | |
|---|-----------------|---------------------|------------------------|---|--|

Detail Description: R&R Reel blades are manufactured from high carbon-boron alloy steel and then hardened to RC46-49 to match the temper of our bedknives and original equipment bedknives. All R&R Reels are cylindrically ground on bearing surfaces and then relief ground. Reels are then precision computer balanced for extended bearing and reel life. R&R Products Reels are guaranteed against defects in material and workmanship for the life of the reel under normal use.:

| | | | | | |
|---|-----------------|---------------------|-------------------|---|--|
| 1 | R12-7079 | 12-7079, 61-0270 | Reel - 5 Blade LH | 1 | |
|---|-----------------|---------------------|-------------------|---|--|

Detail Description: R&R Reel blades are manufactured from high carbon-boron alloy steel and then hardened to RC46-49 to match the temper of our bedknives and original equipment bedknives. All R&R Reels are cylindrically ground on bearing surfaces and then relief ground. Reels are then precision computer balanced for extended bearing and reel life. R&R Products Reels are guaranteed against defects in material and workmanship for the life of the reel under normal use.:

| | | | | | |
|---|-----------------|---------------------|--------------------------|---|--|
| 1 | R12-7089 | 12-7089, 61-0261 | Reel - 8 Blade RH/Center | 2 | |
|---|-----------------|---------------------|--------------------------|---|--|

Detail Description: R&R Reel blades are manufactured from high carbon-boron alloy steel and then hardened to RC46-49 to match the temper of our bedknives and original equipment bedknives. All R&R Reels are cylindrically ground on bearing surfaces and then relief ground. Reels are then precision computer balanced for extended bearing and reel life. R&R Products Reels are guaranteed against defects in material and workmanship for the life of the reel under normal use.:

| | | | | | |
|---|-----------------|---------------------|-------------------|---|--|
| 1 | R12-7099 | 12-7099, 61-0271 | Reel - 8 Blade LH | 1 | |
|---|-----------------|---------------------|-------------------|---|--|

Detail Description: R&R Reel blades are manufactured from high carbon-boron alloy steel and then hardened to RC46-49 to match the temper of our bedknives and original equipment bedknives. All R&R Reels are cylindrically ground on bearing surfaces and then relief ground. Reels are then precision computer balanced for extended bearing and reel life. R&R Products Reels are guaranteed against defects in material and workmanship for the life of the reel under normal use.:

| | | | | | |
|---|-----------------|---------|-------------------------|---|--|
| 1 | R13-1699 | 13-1699 | Reel - 11 Blade RH/Rear | 2 | |
|---|-----------------|---------|-------------------------|---|--|

All original equipment manufacturers names and part numbers are used for identification purposes only, and we are in no way implying that our products are original equipment parts. Prices subject to change without notice.



Replaces Toro Reelmaster 216 Parts

Traction Unit
Reel & Bedknife



| Item No | R&R Part No. | OEM Part No. | Description | Qty Req | Order Quantity |
|---------|--------------|--------------|-------------|---------|----------------|
|---------|--------------|--------------|-------------|---------|----------------|

Detail Description: R&R Reel blades are manufactured from high carbon-boron alloy steel and then hardened to RC46-49 to match the temper of our bedknives and original equipment bedknives. All R&R Reels are cylindrically ground on bearing surfaces and then relief ground. Reels are then precision computer balanced for extended bearing and reel life. R&R Products Reels are guaranteed against defects in material and workmanship for the life of the reel under normal use.:

| | | | | |
|---|-----------------|---------|--------------------|---|
| 1 | R13-1709 | 13-1709 | Reel - 11 Blade LH | 1 |
|---|-----------------|---------|--------------------|---|

Detail Description: R&R Reel blades are manufactured from high carbon-boron alloy steel and then hardened to RC46-49 to match the temper of our bedknives and original equipment bedknives. All R&R Reels are cylindrically ground on bearing surfaces and then relief ground. Reels are then precision computer balanced for extended bearing and reel life. R&R Products Reels are guaranteed against defects in material and workmanship for the life of the reel under normal use.:

R&R Bedknives, Lifetime Guaranteed

| | | | | |
|---|-----------------|----------------------------------|--------------------------------|---|
| 2 | R62-5180 | 105-6785, 61-0800, 62-5180 | Bedknife - Lowcut - 27 in Unit | 1 |
|---|-----------------|----------------------------------|--------------------------------|---|

Detail Description: R&R Bedknives are manufactured from high carbon-boron alloy steel and then hardened to RC46-49 to match the temper of our reel blades and original equipment reels. Bedknives are surface ground on the top and front edge and straightened three times before being packaged with oil for rust prevention. All R&R Bedknives now have an increased front edge grind for added life. All R&R Bedknives are guaranteed against defects in material and workmanship under normal use for the life of the part.:

R&R Razor Tool Steel Bedknives, Lifetime Guaranteed

| | | | | |
|---|------------------|----------|---|---|
| 2 | R112-8910 | 112-8910 | Bedknife - Razor Tool Steel - 27 High Cut | 1 |
|---|------------------|----------|---|---|

Detail Description: R&R Razor bedknives are manufactured from premium alloy tool steel steel and then hardened to RC48-51 to match the temper of our Razor reel blades and original equipment premium series reels. Bedknives are surface ground on the top and front edge and specially packaged for rust prevention. All R&R Bedknives now have an increased front edge grind for added life. All R&R Bedknives are guaranteed against defects in material and workmanship under normal use for the life of the part. You can expect up to double the life over standard bedknives.:

Overhaul Kits & Service Tools

| | | | | |
|---|----------------|--|-----------------------------|---|
| 6 | R150545 | | Overhaul Kit - Cutting Unit | 0 |
|---|----------------|--|-----------------------------|---|

All original equipment manufacturers names and part numbers are used for identification purposes only, and we are in no way implying that our products are original equipment parts. Prices subject to change without notice.



Replaces Toro Reelmaster 216 Parts

Traction Unit
Reel & Bedknife



| Item No | R&R Part No. | OEM Part No. | Description | Qty Req | Order Quantity |
|---------|--------------|--------------|-------------|---------|----------------|
|---------|--------------|--------------|-------------|---------|----------------|

Detail Description: Includes 6 ea.: R56-9510 Rubber Bushings, R56-9520 Nyliner Bushings; 2 ea.: R52-2890 Bushings, R71-1360 Reel Bearings, R62-5510 Bushings, R257-6 Thrust Bearings; 1 ea.: R253-84 Seal:

| | | | | | |
|---|-----------------|--|-----------------------------|---|--|
| 7 | R13-3649 | | Overhaul Kit - Cutting Unit | 0 | |
|---|-----------------|--|-----------------------------|---|--|

Detail Description: Includes 10 ea.: R150476 Screws; 2 ea.: R257-6 Bearings, R52-2890 Bushings, R56-9510 Bushings, R56-9520 Bushings, R62-5510 Bushings, R71-1360 Bearings & 1ea: R253-84 Seal:

| | | | | | |
|---|-----------------|---------|----------------------------|---|--|
| 8 | R51-0880 | 51-0880 | Bedknife Screw Driver Tool | 0 | |
|---|-----------------|---------|----------------------------|---|--|

Detail Description: Easily install and remove bed knife screws with the help of a ratchet with 3/8" drive. Tool manufactured with hardened alloy steel.:

Other Parts Available

| | | | | | |
|----|-----------------|---------|---------------------------|---|--|
| 10 | R57-5270 | 57-5270 | Spring - Adjusting Handle | 1 | |
|----|-----------------|---------|---------------------------|---|--|

| | | | | | |
|----|-----------------|---------|-------------------------|---|--|
| 11 | R3296-62 | 3296-62 | Locknut - 1/2-20 LH Jam | 1 | |
|----|-----------------|---------|-------------------------|---|--|

| | | | | | |
|----|-----------------|----------------------|--------------------------|---|--|
| 12 | R57-5260 | 107-7409, 57-5260 | Pivot - 1/2-20 - Bed Bar | 1 | |
|----|-----------------|----------------------|--------------------------|---|--|

| | | | | | |
|----|-----------------|---------|-------------------|---|--|
| 13 | R52-2890 | 52-2890 | Bushing - Flanged | 2 | |
|----|-----------------|---------|-------------------|---|--|

| | | | | | |
|----|-----------------|---------------------|---------|---|--|
| 14 | R62-5510 | 52-2870, 62-5510 | Bushing | 2 | |
|----|-----------------|---------------------|---------|---|--|

| | | | | | |
|----|----------------|--------|---------------------------|---|--|
| 15 | R302-18 | 302-18 | Zerk - Grease Press Style | 1 | |
|----|----------------|--------|---------------------------|---|--|

| | | | | | |
|----|-----------------|---|---------|---|--|
| 16 | R71-1360 | 251-219, 251-253, 251-254, 251-320, 71-1360, 88-7880, 94-3405 | Bearing | 2 | |
|----|-----------------|---|---------|---|--|

| | | | | | |
|----|----------------|--------|---|----|--|
| 28 | R150475 | 3-6462 | Screw - Bedknife Stainless 5/16-18 x 5/8 | 10 | |
|----|----------------|--------|---|----|--|

Detail Description: Pre-Packaged in bags of 50:

All original equipment manufacturers names and part numbers are used for identification purposes only, and we are in no way implying that our products are original equipment parts. Prices subject to change without notice.



Replaces Toro Reelmaster 216 Parts

Traction Unit
Reel & Bedknife



| Item No | R&R Part No. | OEM Part No. | Description | Qty Req | Order Quantity |
|---------|-----------------|------------------------------------|--------------------------------------|---------|----------------|
| 28 | R150476 | 3-3816, 3-6462, 57-4910 | Screw - Bedknife 5/16-18 x 5/8 | 10 | |
| 39 | R61-1070 | 61-1070 | Handle - Bed Bar Adjustment | 1 | |
| 44 | R56-9510 | 56-9510 | Bushing - Rubber For Bed Bar / RI | 6 | |
| 45 | R56-9520 | 56-9520 | Bushing - Nyliner | 6 | |
| 46 | R61-1210 | 61-1210, 61-1210-01 | Backing Bar - Bed Knife | 1 | |
| 47 | R52-2980 | 52-2980 | Housing - Pivot Spa | 1 | |
| 50 | R61-3000 | 61-3000 | Shaft - Pivot Cutting Unit | 3 | |
| 51 | R93-8849 | 61-1130, 93-8817, 93-8849 | Shield - Rear Grass Fits 27 in Units | 1 | |
| 52 | R61-0560 | 61-0560 | Shield - Top | 1 | |
| 53 | R443818 | 01-191-0813, 3218-18, 3218-5 | Nut - 1/2-13 Hex Jam Zinc | 2 | |
| 54 | R57-5190 | 32110-19, 57-5190 | Screw - Adjusting | 2 | |
| 55 | R61-3280 | 61-3280 | Cover - Rubber Side | 2 | |
| 56 | R61-3290 | 61-3290 | Cover - Rubber Center | 2 | |
| 57 | R3295-48 | 3295-48 | Rivet - 3/16 x 3/8 Tub | 8 | |
| 58 | R61-0430 | 61-0430, 61-0430-01 | Bracket - Long - Rear Roller | 2 | |
| 59 | R61-0440 | 61-0440 | Bracket - Short - Front Roller | 2 | |
| 60 | R61-0910 | 61-0910 | Bracket | 4 | |

All original equipment manufacturers names and part numbers are used for identification purposes only, and we are in no way implying that our products are original equipment parts. Prices subject to change without notice.



Replaces Toro Reelmaster 216 Parts

Traction Unit
Reel & Bedknife



| Item No | R&R Part No. | OEM Part No. | Description | Qty Req | Order Quantity |
|---------|--------------|--|----------------------------|---------|----------------|
| 61 | R3296-39 | 32127-25, 32128-36, 3290-357, 3296-17, 3296-22, 3296-39, 915663P, 99-7443 | Locknut - 3/8-16 Nylon | 16 | |
| 62 | R3231-2 | 01-157-0170, 01-173-0608, 3231-2, 3231-22, 3231-28, 900063P | Bolt - Carriage 3/8-16 x 1 | 4 | |
| 63 | R61-0790 | 323-57, 61-0790 | Bolt - Roller Adjustment | 4 | |
| 64 | R61-0420 | 61-0420, 61-0420-01 | Support - HOC | 4 | |
| 65 | R61-3380 | 61-3380 | Belt - V Reel | 3 | |
| 66 | R52-3000 | 52-3000 | Arm - Spring | 1 | |
| 67 | R302-5 | 21-6010, 302-11, 302-37, 302-47, 302-5, 302-57, 302-58, 302-6, 31-0300, 32-9660, 60-0800, 62-3880, 92-4181 | Fitting - Grease | 1 | |
| 68 | R52-2990 | 324-25, 52-2990 | Bolt - Spring Retainer | 1 | |
| 69 | R187-0 | 3256-25, 7-0032 | Washer - Flat 7/16 SAE | 1 | |
| 70 | R61-1950 | 61-1950 | Washer - Nylon - Bed Bar | 1 | |

All original equipment manufacturers names and part numbers are used for identification purposes only, and we are in no way implying that our products are original equipment parts. Prices subject to change without notice.



Replaces Toro Reelmaster 216 Parts

Traction Unit
Reel & Bedknife



| Item No | R&R Part No. | OEM Part No. | Description | Qty Req | Order Quantity |
|---------|-----------------|---|---------------------------------|---------|----------------|
| 72 | R61-1010 | 61-1010 | Housing - Bed Bar | 1 | |
| 72 | R14-4459 | 14-4459 | Housing - w/Bushing For Bed Bar | 1 | |
| 73 | R62-7120 | 62-7120 | Washer | 1 | |
| 74 | R3256-56 | 3256-56, 60-4750 | Washer | 1 | |
| 75 | R3253-4 | 01-166-0110, 01-166-0510, 23-10-GD, 24-7170, 30-8520, 3253-4, 48-9350, 48-9360, 48-9570, 68-9420, 99-7577 | Washer - Lock 5/16 Zinc | 1 | |
| 76 | R322-3 | 01-150-1420, 01-178-0506, 20-24-AD, 20-24-AGD, 322-3, 48-9270, 513339, 908017P | Bolt - Hex HD 5/16-18 x 3/4 | 1 | |
| 77 | R253-84 | 253-84, 7-0044 | Seal - Micro Adj. | 1 | |
| 78 | R257-5 | 257-5 | Washer - Thrust | 4 | |
| 79 | R257-6 | 257-6 | Bearing - Thrust | 2 | |

All original equipment manufacturers names and part numbers are used for identification purposes only, and we are in no way implying that our products are original equipment parts. Prices subject to change without notice.